

# HDC1 HT

## Construction Drive for High Traction

**Applications: Severe Service On/Off Road Drive Position.**



Legend:

|           |                    |                  |                   |
|-----------|--------------------|------------------|-------------------|
|           |                    |                  |                   |
| 3G Casing | SmartWay® Verified | Intelligent Tire | Retread Available |

**PRODUCT FEATURES ABOVE ONLY APPLY TO PRODUCTS IF THE MATCHING ICON IS DARKENED.**

# HDC1 HT

## Construction Drive for High Traction

GOODS  PEOPLE  CONSTRUCTION



### PRODUCT DATA

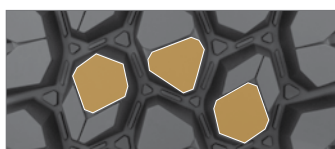
| TIRE SIZE | LOAD RANGE | ARTICLE NUMBER | TREAD DEPTH (32nds) | MAX SPEED (MPH) | STATIC LOADED RADIUS |     | OVERALL INFLATED DIAMETER |      | OVERALL INFLATED WIDTH |     | LOADED SECTION WIDTH |     | APPROVED RIM(S) | MINIMUM DUAL SPACING |     | REVS PER UNIT |     | TIRE WEIGHT |    | MAX. LOAD @ INFLATION |                       |
|-----------|------------|----------------|---------------------|-----------------|----------------------|-----|---------------------------|------|------------------------|-----|----------------------|-----|-----------------|----------------------|-----|---------------|-----|-------------|----|-----------------------|-----------------------|
|           |            |                |                     |                 | IN                   | MM  | IN                        | MM   | IN                     | MM  | IN                   | MM  |                 | IN                   | MM  | MI            | KM  | LB          | KG | LBS, PSI (KG, KPa)    | LBS, PSI (KG, KPa)    |
|           |            |                |                     |                 |                      |     |                           |      |                        |     |                      |     |                 |                      |     |               |     |             |    |                       |                       |
| 11R22.5   | H          | 05250950000    | 32                  | 68              | 19.9                 | 505 | 42.2                      | 1072 | 11.6                   | 295 | 13.0                 | 330 | 8.25            | 12.5                 | 318 | 491           | 305 | 136         | 62 | 6610, 120 (3000, 830) | 6005, 120 (2725, 830) |
| 11R24.5   | H          | 05250810000    | 32                  | 68              | 20.7                 | 526 | 44.2                      | 1123 | 11.6                   | 295 | 12.5                 | 318 | 8.25            | 12.5                 | 318 | 468           | 291 | 146         | 66 | 7160, 120 (3250, 830) | 6610, 120 (3000, 830) |

**TUBELESS TIRES ON 15 DEGREE DROP CENTER RIMS**  
 Note - Rim listed first is the measuring rim. Minimum Dual Spacing calculated without chains. # - Exceeding the lawful speed limit is neither recommended nor endorsed. Overall widths will change 0.1 inch (2.5 mm) for each 1/4 inch change in rim width. Minimum dual spacing should be adjusted accordingly. Continental Tire the Americas, LLC reserves the right to change product specifications at any time without notice or obligations. Please consult rim manufacturers load and inflation limits. Never exceed rim manufacturers limits without permission of component manufacturer.

### Features & Benefits



**Rigid belt package** with full width top belt and extra sidewall protection for increased durability.



**Diamond shaped tread lug design** and shoulder notches are optimal for chaining.



**Alternating groove geometry** and stone bumper system for maximum stone ejection.



Built on the innovative **Conti 3G Casing** for maximum retreadability.



This product is Mud + Snow Certified.

**Applications:** Severe Service On/Off Road Drive Position.