

HSR2 Eco Plus

Fuel-Efficient, Regional Steer

Applications: On highway and regional hauling, all-position.

Legend:

3G Casing	SmartWay Verified	Intelligent Tire	Retread Available

PRODUCT FEATURES ABOVE ONLY APPLY TO PRODUCTS IF THE MATCHING ICON IS DARKENED.

HSR2 Eco Plus

Fuel-Efficient, Regional Steer

GOODS PEOPLE CONSTRUCTION



PRODUCT DATA

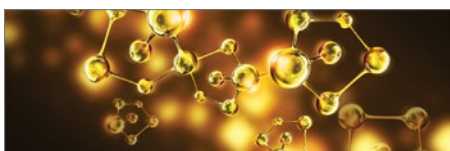


TIRE SIZE	LOAD RANGE	ARTICLE NUMBER	TREAD DEPTH (32nds)	MAX SPEED (MPH)	STATIC LOADED RADIUS		OVERALL INFLATED DIAMETER		OVERALL INFLATED WIDTH		LOADED SECTION WIDTH		APPROVED RIMS(S)	MINIMUM DUAL SPACING		REVS PER UNIT		TIRE WEIGHT		MAX. LOAD @ INFLATION	
					IN	MM	IN	MM	IN	MM	IN	MM		IN	MM	IN	MM	MI	KM	LB	KG
275/80R22.5*	H	05120850000	23	75	18.7	475	40.0	1016	11.1	282	12.6	320	8.25, 7.50	12.5	318	518	322	115	52	7160, 120 (3250, 830)	6610, 120 (3000, 830)

TUBELESS TIRES ON 15 DEGREE DROP CENTER RIMS

Note - Rim listed first is the measuring rim. Minimum Dual Spacing calculated without chains. * - ECE Certified. # - Exceeding the lawful speed limit is neither recommended nor endorsed. Overall widths will change 0.1 inch (2.5 mm) for each 1/4 inch change in rim width. Minimum dual spacing should be adjusted accordingly. 315/80R22.5 tires used on 8.25" rims are restricted to a maximum of 7610 lbs at 120 psi. Continental Tire the Americas, LLC reserves the right to change product specifications at any time without notice or obligations. Please consult rim manufacturers load and inflation limits. Never exceed rim manufacturers limits without permission of component manufacturer.

Features & Benefits

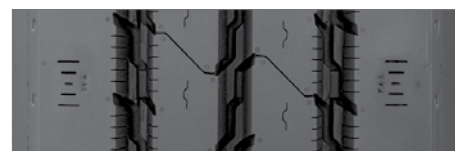


Advanced tread compounding provides this Eco Plus version with **20% less rolling resistance** than the original HSR2.

23/32" deep **rolling resistant tread compound** for long tread life on highway and regional road combined applications.



Sidewall with curb rib reduces damage from curbing, cuts and abrasions.



Patented innovative groove technology leads to minimum stone retention, extending casing life.

Large radial grooves for improved resistance to groove cracking.

Applications: On highway and regional hauling, all-position.