



Curing Bladders

Technical Databook 2023 / 2024

About us

Founded in 1871, Continental has extensive know-how in tire technology and consequently, in the manufacturing and application of bladders for tire production.

The ContiBladders Unit has been established to focus all bladder related expertise and resources from various areas of our corporation into one organization to better serve our worldwide customers.

We are committed to create value for our customers by providing high quality ContiBladders for curing and tire building at competitive prices.

Every year we manufacture more than 750.000 ContiBladders used in our customer's plants worldwide.

In our warehouses we constantly keep about 70.000 bladders on inventory for quick delivery.

Triggered by customer specific requirements, we develop new solutions for curing and tire building bladders, applying e.g. Finite Element Method (FEM) and the full range of R&D resources available at Continental.

Using our products, you benefit from our experience of producing more than 155 million tires per year in Continental Tire plants.

With ContiBladders manufacturing sites on three continents and tire plants all over the world, we have our products and application support as close as possible.

Wherever you are, we are nearby.



Contents

About us	2
Contacts	3
Advantages	4
Recommendations	5
ContiBladders Surface Design	6
Bladder Codes and Identifiers	7
Autoform Type Bladders for	
Passenger / Light Truck Tires	8 - 9
Truck Tires	9
Hydraulic Type Bladders for	
Passenger / Light Truck Tires	10 - 11
Truck Tires	12
BOM Type Bladders for	
Passenger / Light Truck Tires Radial	14 - 15
Passenger / Light Truck Tires Bias	16 - 17
Truck Tires Radial	18
Truck Tires Bias	19
OTR Tires Bias / Radial	20
OTR Tires Bias	21 - 23
Kart / Wheelbarrow / Industrial / Farm Implement Tires	24 - 25
Motorcycle Tires	26
Bicycle Tires	28
Air Springs	30
Retreading	32
Publisher's Imprint	35

Contacts

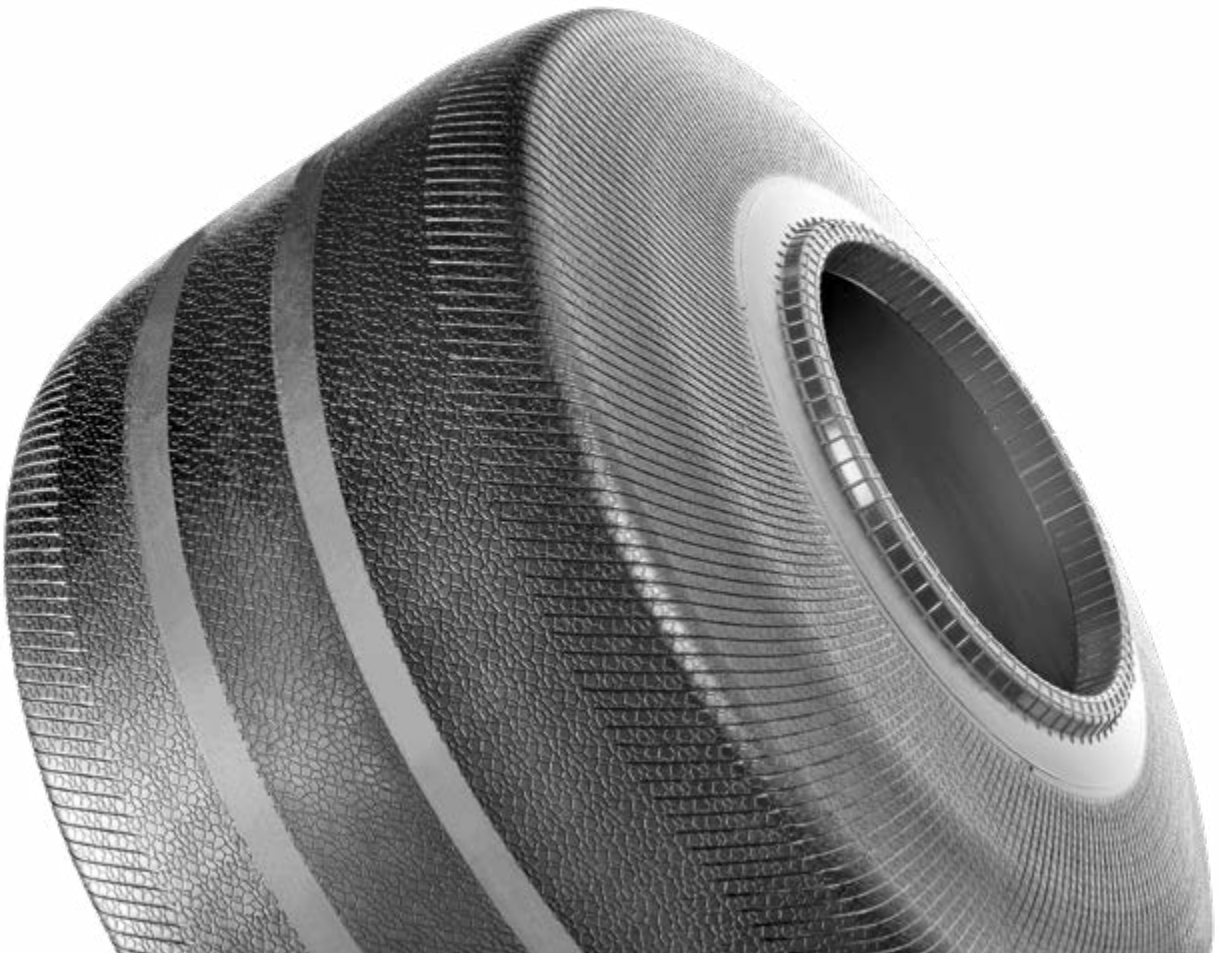
Head Office Hannover (Germany)

Phone: +49 511 976 45 20

<p>Sales Office EMEA Phone: +49 511 976 33 66 Email: torsten.rupp@conti.de</p>	<p>Sales Office APAC Phone: +603 7787 88 34 Email: raymon.ooi-kim-leng@conti.my</p>	<p>Sales Office Americas Phone: +1 704 488 9871 Email: steven.bellenger@conti-na.com</p>
--------------------------------------------------------------------------------------------------------------------	-------------------------------------------------------------------------------------------------------------------------	------------------------------------------------------------------------------------------------------------------------------

Advantages of ContiBladders

- › ContiBladders Unit is an independent organization inside the Continental Corporation, fully dedicated to development, manufacturing and sales of bladders
- › ContiBladders R&D utilizes all resources of Continental's tire R&D
- › Customer specific developments
- › Extensive bladder application experience from both Continental tire plants and worldwide customers
- › Excellent technical and logistical support for our customers
- › Global manufacturing and support base
- › Sufficient inventory for just-in-time delivery
- › Sustainable and flexible compound
- › Bladder contour optimized to tire contour
- › Surface structure to prevent trapped air
- › Long lasting and simple to use during service



Recommendations for achieving best Bladder Performance

ContiBladders are manufactured using a well proven long-lasting heat conductive butyl rubber compound. The high degree of elasticity of the bladder guarantees trouble-free molding and stripping.

The following points should be considered under all circumstances:

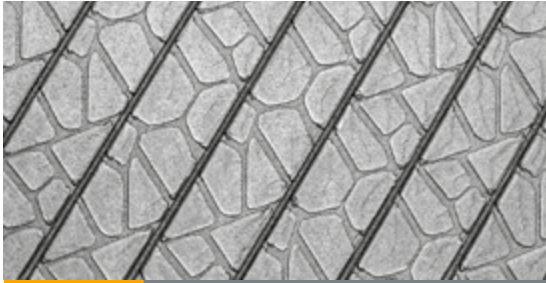
1. Bladders should be stored in a dark and dry place, protected from direct sunlight and ozone sources.
2. Please follow press manual instructions for proper mounting. Any imperfection of the bladder mounting rings needs to be avoided.
3. Before mounting bladders into curing press we recommend to pre-treat the bladders with a bladder coating material.
4. Before tire curing starts, the bladder should be fully warmed up. For this, the machine should be operated according to the press manual.
5. In case of pre-inflating during the warm up, the bladder outside diameter must not exceed the tire sidewall plate outside diameter of the tire mold, in order to avoid non-symmetric deformation.
6. If the bladder has cooled down after an interruption in the curing process, it is imperative to warm it up again.
7. Heavily oxygenated water should be neutralized by the addition of oxygen scavengers or similar ingredients, in order to avoid deterioration of the bladder.
8. To avoid sticking, trapped air or stripping problems, a proper application of a tire inside paint is recommended.

To optimize your bladder performance furthermore we recommend the application of a permanent bladder coating material.

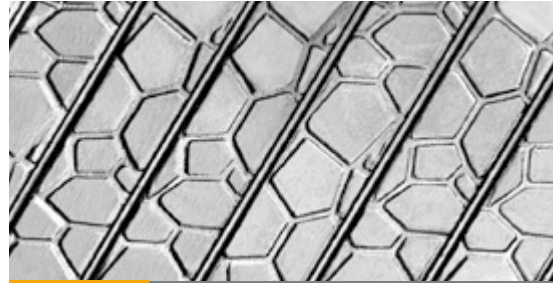
For our customers, we offer on-site service to optimize bladder application and performance.

In case of any questions please contact your responsible sales representative (see on page 3).

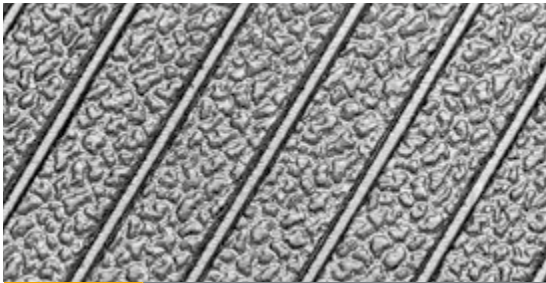
ContiBladders Surface Design



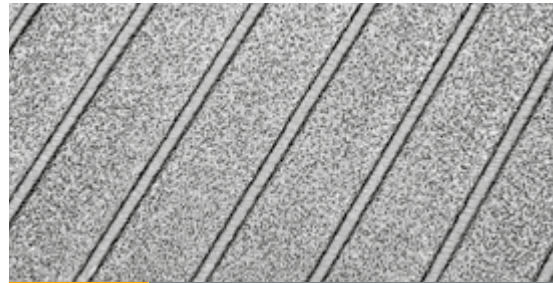
Type 1.1 Advanced pebbles 1.1



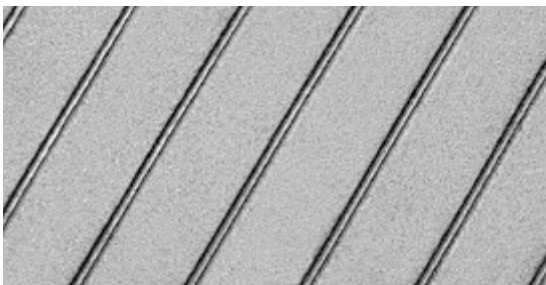
Type 1 Advanced pebbles



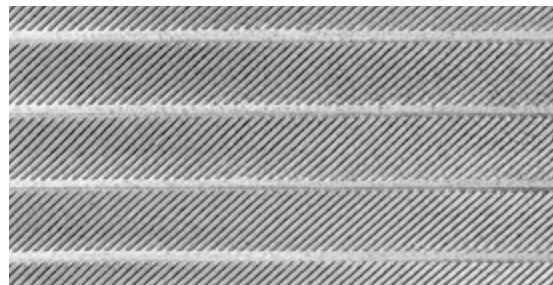
Type 2 Standard pebbles



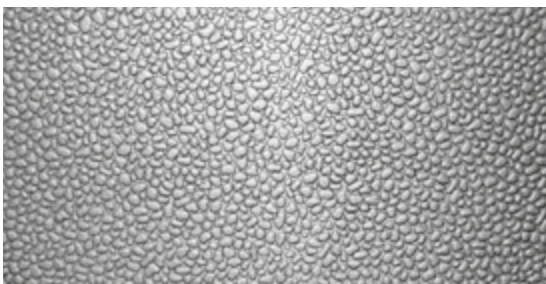
Type 3 Fine sandpaper



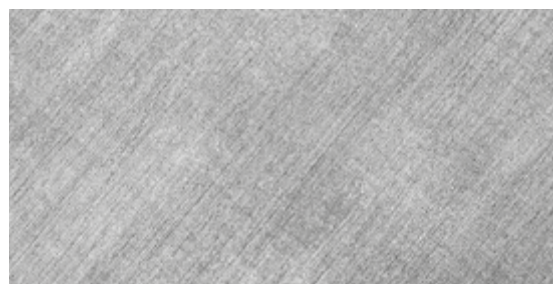
Type 4 Smooth, venting grooves



Type 5 Grooves



Type 6 Small pebbles



Type 10 Smooth, without venting grooves

Bladder Codes and Identifiers



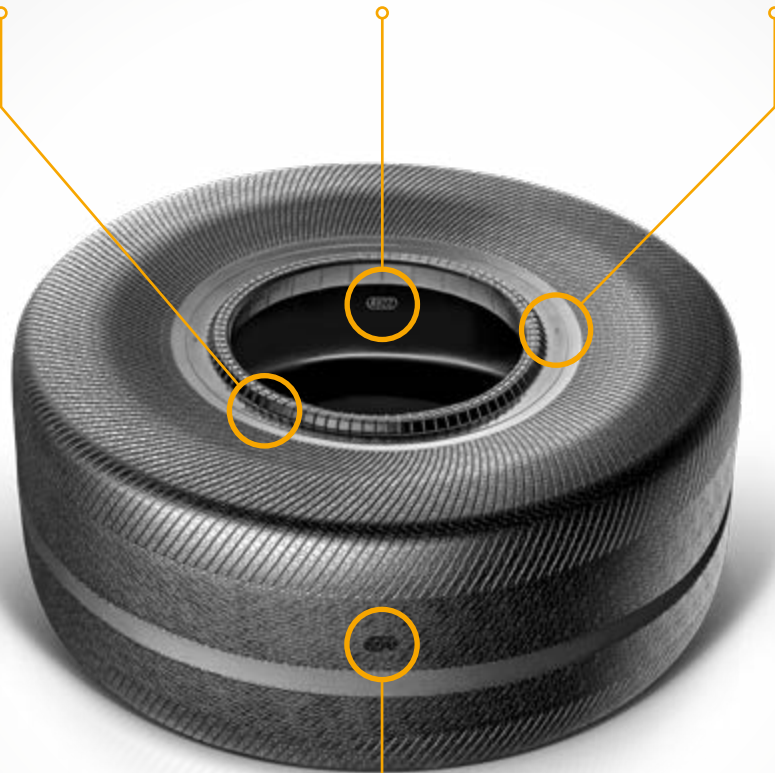
SN: Serial Number of Bladder Mold
CN: Contour Number



Week Code
(Production week and year)



Angle Indicator
(0° - 90° - 180° - 270°)



Bladder Code



Made in Czech Republic
(Underscore 1st position)



Made in Mexico
(Underscore 2nd position)

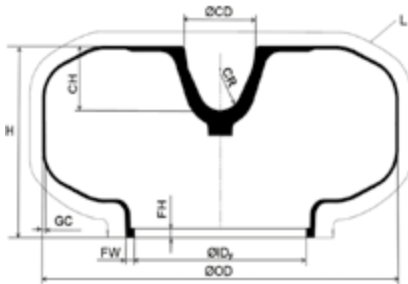


Made in Germany
(Underscore 3rd position)



Made in Malaysia
(Underscore 4th position)

Autoform Type Bladders Application in Autoform Presses

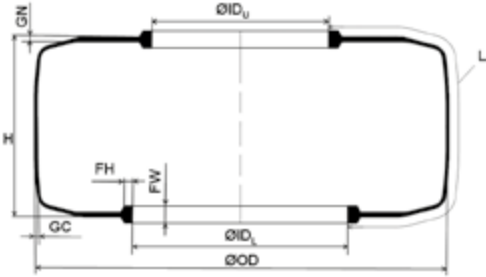


Bladder Description	Article Number		(ID) _p Foot ID	(L) Length	(H) Height	(OD) Outside Dia- meter	(GC) Crown Gauge	(FH) Foot Height	(FW) Foot Width	(CD) Cone Dia- meter	(CH) Cone Height	(CR) Cone Bottom Radius		Trimmed Weight	Surface Design	Packing Unit
Passenger / Light Truck Tires																
AP 12 A	20 17 912	mm	245	940	203	480	4.5	11.5	12.5	63	45	16	kg	3.0	2	60
		inch	9.65	37.01	7.99	18.90	0.18	0.45	0.49	2.48	1.77	0.63	lbs	6.6		
AP 2 K 260	20 13 222	mm	260	1051	240	505	4.5	13.5	13.5	112	Kobe	Kobe	kg	3.5	1	60
		inch	10.24	41.38	9.45	19.88	0.18	0.53	0.53	4.41	system	system	lbs	7.7		
AP 13-0 C	20 17 951	mm	273	924	210	470	4.5	13.5	13.5	63	45	16	kg	2.9	3	60
		inch	10.75	36.38	8.27	18.50	0.18	0.53	0.53	2.48	1.77	0.63	lbs	6.4		
AP 13-1 C	20 17 942	mm	273	940	199	495	4.5	13.5	13.5	63	45	16	kg	2.9	4	60
		inch	10.75	37.01	7.83	19.49	0.18	0.53	0.53	2.48	1.8	0.63	lbs	6.4		
AP 13-1 CK	20 13 252	mm	273	940	199	495	4.5	13.5	13.5	63	Kobe	Kobe	kg	3.0	4	60
		inch	10.75	37.01	7.83	19.49	0.18	0.53	0.53	2.48	system	system	lbs	6.6		
AP 13-2 C	20 17 938	mm	273	988	207	520	4.5	13.5	13.5	63	45	16	kg	3.5	2	60
		inch	10.75	38.90	8.15	20.47	0.18	0.53	0.53	2.48	1.8	0.63	lbs	7.7		
AP 13-3 A	20 17 927	mm	273	1022	219	530	4.5	13.5	13.5	63	45	16	kg	3.4	2	60
		inch	10.75	40.24	8.62	20.87	0.18	0.53	0.53	2.48	1.77	0.63	lbs	7.5		
AP 2 C 273	20 13 074	mm	273	1051	240	505	4.5	13.5	13.5	63	45	16	kg	3.5	1	60
		inch	10.75	41.38	9.45	19.88	0.18	0.53	0.53	2.48	1.8	0.63	lbs	7.7		
AP 2 273	20 13 075	mm	273	1051	240	505	4.5	13.5	13.5	112	90	35	kg	3.8	1	60
		inch	10.75	41.38	9.45	19.88	0.18	0.53	0.53	4.41	3.54	1.38	lbs	8.4		
AP 2 K 273	20 13 076	mm	273	1051	240	505	4.5	13.5	13.5	112	Kobe	Kobe	kg	3.5	1	60
		inch	10.75	41.38	9.45	19.88	0.18	0.53	0.53	4.41	system	system	lbs	7.7		
AP 3 C 273	20 13 268	mm	273	1121	260	520	4.5	13.5	13.5	63	45	16	kg	3.5	1	60
		inch	10.75	44.13	10.24	20.47	0.18	0.53	0.53	2.48	1.77	0.63	lbs	7.7		
AP 3 273	20 13 270	mm	273	1121	260	520	4.5	13.5	13.5	112	90	35	kg	3.8	1	60
		inch	10.75	44.13	10.24	20.47	0.18	0.53	0.53	4.41	3.5	1.38	lbs	8.4		
AP 3 K 273	20 13 269	mm	273	1121	260	520	4.5	13.5	13.5	112	Kobe	Kobe	kg	3.5	1	60
		inch	10.75	44.13	10.24	20.47	0.18	0.53	0.53	4.41	system	system	lbs	7.7		
AP 4 C 273	20 13 077	mm	273	1189	265	565	4.5	13.5	13.5	63	45	16	kg	4.2	1	50
		inch	10.75	46.81	10.43	22.24	0.18	0.53	0.53	2.48	1.8	0.63	lbs	9.2		
AP 4 273	20 13 078	mm	273	1189	265	565	4.5	13.5	13.5	112	90	35	kg	4.5	1	35
		inch	10.75	46.81	10.43	22.24	0.18	0.53	0.53	4.41	3.54	1.38	lbs	10.0		
AP 4 K 273	20 13 079	mm	273	1189	265	565	4.5	13.5	13.5	112	Kobe	Kobe	kg	4.3	1	50
		inch	10.75	46.81	10.43	22.24	0.18	0.53	0.53	4.41	system	system	lbs	9.4		
AP 13-60-5	20 17 901	mm	273	1207	272	580	4.5	13.5	13.5	63	45	16	kg	4.4	2	60
		inch	10.75	47.52	10.71	22.83	0.18	0.53	0.53	2.48	1.77	0.63	lbs	9.7		
AP 5 C 273	20 13 143	mm	273	1302	297	570	4.3	13.5	13.5	63	45	16	kg	4.8	1	40
		inch	10.75	51.26	11.69	22.44	0.17	0.53	0.53	2.48	1.8	0.63	lbs	10.6		
AP 5 273	20 13 144	mm	273	1302	297	570	4.3	13.5	13.5	112	90	35	kg	4.9	1	50
		inch	10.75	51.26	11.69	22.44	0.17	0.53	0.53	4.41	3.54	1.38	lbs	10.8		

Bladder Description	Article Number		(ID _p) Foot ID	(L) Length	(H) Height	(OD) Outside Dia- meter	(GC) Crown Gauge	(FH) Foot Height	(FW) Foot Width	(CD) Cone Dia- meter	(CH) Cone Height	(CR) Cone Bottom Radius		Trimmed Weight	Surface Design	Packing Unit
Passenger / Light Truck Tires																
AP 5 K 273	20 13 145	mm	273	1302	297	570	4.3	13.5	13.5	112	Kobe	Kobe	kg	4.7	1	40
		inch	10.75	51.26	11.69	22.44	0.17	0.53	0.53	4.41	system	system	lbs	10.4		
AP 6 C 273	20 13 083	mm	273	1400	360	610	4.5	13.5	13.5	63	45	16	kg	5.3	1	50
		inch	10.75	55.12	14.17	24.02	0.18	0.53	0.53	2.48	1.77	0.63	lbs	11.7		
AP 6 273	20 13 084	mm	273	1400	360	610	4.5	13.5	13.5	112	90	35	kg	5.7	1	30
		inch	10.75	55.12	14.17	24.02	0.18	0.53	0.53	4.41	3.5	1.38	lbs	12.6		
AP 6 K 273	20 13 085	mm	273	1400	360	610	4.5	13.5	13.5	112	Kobe	Kobe	kg	5.2	1	40
		inch	10.75	55.12	14.17	24.02	0.18	0.53	0.53	4.41	system	system	lbs	11.6		
AP 4 C 329	20 13 080	mm	329	1133	265	565	4.5	13.5	13.5	63	45	16	kg	4.3	1	50
		inch	12.95	44.61	10.43	22.24	0.18	0.53	0.53	2.48	1.8	0.63	lbs	9.4		
AP 4 329	20 13 081	mm	329	1133	265	565	4.5	13.5	13.5	112	90	35	kg	4.5	1	50
		inch	12.95	44.61	10.43	22.24	0.18	0.53	0.53	4.41	3.54	1.38	lbs	10.0		
AP 4 K 329	20 13 082	mm	329	1133	265	565	4.5	13.5	13.5	112	Kobe	Kobe	kg	4.4	1	50
		inch	12.95	44.61	10.43	22.24	0.18	0.53	0.53	4.41	system	system	lbs	9.7		
AP 5 C 329	20 13 146	mm	329	1245	297	570	4.3	13.5	13.5	63	45	16	kg	4.5	1	50
		inch	12.95	49.02	11.69	22.44	0.17	0.53	0.53	2.48	1.77	0.63	lbs	9.8		
AP 5 329	20 13 147	mm	329	1245	297	570	4.3	13.5	13.5	112	90	35	kg	4.9	1	30
		inch	12.95	49.02	11.69	22.44	0.17	0.53	0.53	4.41	3.5	1.38	lbs	10.7		
AP 5 K 329	20 13 148	mm	329	1245	297	570	4.3	13.5	13.5	112	Kobe	Kobe	kg	4.6	1	50
		inch	12.95	49.02	11.69	22.44	0.17	0.53	0.53	4.41	system	system	lbs	10.1		
AP 16-60-5 C	20 17 947	mm	329	1246	321	570	4.5	13.5	16.5	63	45	16	kg	4.9	4	50
		inch	12.95	49.06	12.64	22.44	0.18	0.53	0.65	2.48	1.8	0.63	lbs	10.7		
AP 16-50-3	20 16 051	mm	329	1286	321	610	4.5	13.5	13.5	63	45	16	kg	5.3	2	30
		inch	12.95	50.63	12.64	24.02	0.18	0.53	0.53	2.48	1.77	0.63	lbs	11.7		
AP 6 C 329	20 13 086	mm	329	1341	360	610	4.5	13.5	13.5	63	45	16	kg	5.2	1	50
		inch	12.95	52.80	14.17	24.02	0.18	0.53	0.53	2.48	1.8	0.63	lbs	11.5		
AP 6 329	20 13 087	mm	329	1341	360	610	4.5	13.5	13.5	112	90	35	kg	5.6	1	50
		inch	12.95	52.80	14.17	24.02	0.18	0.53	0.53	4.41	3.54	1.38	lbs	12.4		
AP 6 K 329	20 13 088	mm	329	1341	360	610	4.5	13.5	13.5	112	Kobe	Kobe	kg	5.2	1	50
		inch	12.95	52.80	14.17	24.02	0.18	0.53	0.53	4.41	system	system	lbs	11.5		

Truck Tires																
AP 20-1 A	20 17 921	mm	430	1516	323	788	7.0	20.5	22.5	112	90	35	kg	11.2	4	10
		inch	16.93	59.69	12.70	31.02	0.28	0.81	0.89	4.41	3.54	1.38	lbs	24.6		
AP 20-1 C	20 17 950	mm	430	1742	406	840	7.0	20.5	23.0	112	90	35	kg	14.7	4	10
		inch	16.93	68.58	15.96	33.07	0.28	0.81	0.91	4.41	3.54	1.38	lbs	32.3		
AP 20-2 C	20 17 933	mm	430	1800	406	887	7.0	20.5	23.0	112	90	35	kg	14.7	4	13
		inch	16.93	70.87	15.96	34.92	0.28	0.81	0.91	4.41	3.54	1.38	lbs	32.4		
AP 20-3 C NP	20 17 924	mm	430	1886	438	913	7.5	20.5	23.3	112	90	35	kg	16.6	1	8
		inch	16.93	74.25	17.26	35.94	0.30	0.81	0.92	4.41	3.54	1.38	lbs	36.6		

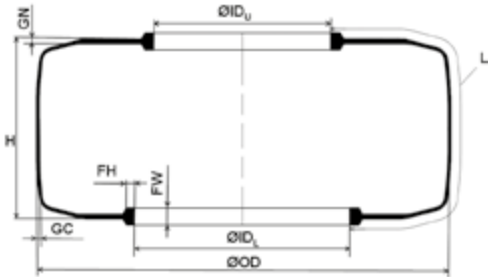
Hydraulic Type Bladders Application in Hydraulic Presses



Bladder Description	Article Number		(ID _U) Upper Foot ID	(ID _L) Lower Foot ID	(L) Length	(H) Height	(OD) Outside Dia- meter	(GC) Crown Gauge	(GN) Neck Gauge	(FH) Foot Height	(FW) Foot Width		Trimmed Weight	Surface Design	Packing Unit
Passenger / Light Truck Tires															
HEB 13 TM	20 17 051	mm	225	170	332	204	380	4.5	7.0	12.0	24.0	kg	2.1	2	60
		inch	8.86	6.69	13.07	8.03	14.96	0.18	0.28	0.47	0.94	lbs	4.7		
HEB 13-0 C NP	20 13 249	mm	225	170	388	237	420	4.5	7.0	12.0	24.0	kg	2.6	1	100
		inch	8.86	6.69	15.28	9.33	16.54	0.18	0.28	0.47	0.94	lbs	5.7		
TS 0 NP	20 13 061	mm	225	170	416	200	510	4.5	7.0	12.0	24.0	kg	2.9	1	100
		inch	8.86	6.69	16.38	7.87	20.08	0.18	0.28	0.47	0.94	lbs	6.3		
TS 1	20 17 043	mm	225	170	420	232	470	4.4	7.0	12.0	24.0	kg	2.9	3	100
		inch	8.86	6.69	16.54	9.13	18.50	0.17	0.28	0.47	0.94	lbs	6.3		
TU 1	20 13 260	mm	225	170	421	199	470	4.5	7.0	12.0	24.0	kg	2.9	1	100
		inch	8.86	6.69	16.57	7.83	18.50	0.18	0.28	0.47	0.94	lbs	6.3		
HEB 13-2 C NP	20 13 207	mm	225	170	430	274	460	4.5	7.0	12.0	24.0	kg	2.9	1	100
		inch	8.86	6.69	16.93	10.79	18.11	0.18	0.28	0.47	0.94	lbs	6.4		
VHL 13-7	20 13 059	mm	225	170	445	247	483	4.4	7.0	11.0	23.0	kg	3.1	3	100
		inch	8.86	6.69	17.52	9.72	19.02	0.17	0.28	0.43	0.91	lbs	6.8		
TS 2 C NP	20 13 241	mm	225	170	458	263	490	4.5	7.0	12.0	24.0	kg	3.1	1	100
		inch	8.86	6.69	18.03	10.35	19.29	0.18	0.28	0.47	0.94	lbs	6.7		
TU 2	20 13 287	mm	225	170	459	219	490	4.3	7.0	12.0	24.0	kg	3.1	1	100
		inch	8.86	6.69	18.07	8.62	19.29	0.17	0.28	0.47	0.94	lbs	6.7		
HEB 13-3 A	20 17 038	mm	225	170	462	270	490	5.0	7.0	12.0	24.0	kg	3.4	2	100
		inch	8.86	6.69	18.19	10.63	19.29	0.20	0.28	0.47	0.94	lbs	7.6		
TU 3	20 13 150	mm	225	170	485	236	500	4.3	7.0	12.0	24.0	kg	3.3	1.1	80
		inch	8.86	6.69	19.09	9.29	19.69	0.17	0.28	0.47	0.94	lbs	7.3		
TS 3 C NP	20 13 178	mm	225	170	485	286	500	4.5	7.0	12.0	24.0	kg	3.4	1	100
		inch	8.86	6.69	19.09	11.26	19.69	0.18	0.28	0.47	0.94	lbs	7.5		
HEB 13-5 C NP	20 13 251	mm	225	170	512	306	506	4.5	7.0	12.0	24.0	kg	3.4	1	100
		inch	8.86	6.69	20.16	12.05	19.92	0.18	0.28	0.47	0.94	lbs	7.6		
VHL 16-2	20 13 052	mm	225	170	515	300	510	4.3	7.0	11.0	23.0	kg	3.7	3	100
		inch	8.86	6.69	20.28	11.81	20.08	0.17	0.28	0.43	0.91	lbs	8.2		
TU 4	20 13 133	mm	225	170	529	263	520	4.3	7.0	12.0	24.0	kg	4.2	1	80
		inch	8.86	6.69	20.83	10.35	20.47	0.17	0.28	0.47	0.94	lbs	9.2		
TS 4 NP	20 13 060	mm	225	170	530	316	520	4.5	7.0	12.0	24.0	kg	3.7	1	100
		inch	8.86	6.69	20.87	12.44	20.47	0.18	0.28	0.47	0.94	lbs	8.1		
TU 4 V1	20 13 233	mm	225	170	553	287	520	4.3	7.0	12.0	24.0	kg	4.2	1	60
		inch	8.86	6.69	21.77	11.30	20.47	0.17	0.28	0.47	0.94	lbs	9.3		
TU 5 225	20 13 119	mm	225	170	552	244	550	4.3	7.0	12.0	24.0	kg	4.5	1	80
		inch	8.86	6.69	21.73	9.61	21.65	0.17	0.28	0.47	0.94	lbs	9.8		
TU 5 V1 225	20 13 123	mm	225	170	576	268	550	4.3	7.0	12.0	24.0	kg	4.6	1	60
		inch	8.86	6.69	22.68	10.55	21.65	0.17	0.28	0.47	0.94	lbs	10.2		
TS 5 NP	20 13 002	mm	276	225	496	308	550	4.5	7.0	12.0	24.0	kg	3.8	1	80
		inch	10.87	8.86	19.53	12.13	21.65	0.18	0.28	0.47	0.94	lbs	8.4		
TS 5 L	20 17 503	mm	276	225	496	308	550	6.2	7.0	12.0	24.0	kg	5.0	2	45
		inch	10.87	8.86	19.53	12.13	21.65	0.24	0.28	0.47	0.94	lbs	10.9		
TU 5	20 13 066	mm	276	225	499	244	550	4.3	7.0	12.0	24.0	kg	4.3	1	80
		inch	10.87	8.86	19.65	9.61	21.65	0.17	0.28	0.47	0.94	lbs	9.5		
TS 5 V1 NP	20 13 004	mm	276	225	520	332	550	4.5	7.0	12.0	24.0	kg	4.2	1	80
		inch	10.87	8.86	20.47	13.07	21.65	0.18	0.28	0.47	0.94	lbs	9.3		

Bladder Description	Article Number		(ID _U) Upper Foot ID	(ID _L) Lower Foot ID	(L) Length	(H) Height	(OD) Outside Diameter	(GC) Crown Gauge	(GN) Neck Gauge	(FH) Foot Height	(FW) Foot Width		Trimmed Weight	Surface Design	Packing Unit
Passenger / Light Truck Tires															
TU 5 V1	20 13 068	mm inch	276 10.87	225 8.86	523 20.59	268 10.55	550 21.65	4.3 0.17	7.0 0.28	12.0 0.47	24.0 0.94	kg lbs	4.5 9.9	1	60
TS 6 C NP	20 13 297	mm inch	276 10.87	225 8.86	532 20.94	288 11.34	570 22.44	4.5 0.18	7.0 0.28	12.0 0.47	24.0 0.94	kg lbs	4.5 9.9	1	50
TU 6	20 13 093	mm inch	276 10.87	225 8.86	532 20.94	263 10.35	570 22.44	4.3 0.17	7.0 0.28	12.0 0.47	24.0 0.94	kg lbs	4.7 10.3	1	60
TS 6 L	20 17 502	mm inch	276 10.87	225 8.86	532 20.94	288 11.34	570 22.44	5.6 0.22	7.0 0.28	12.0 0.47	24.0 0.94	kg lbs	5.4 11.8	3	60
TS 6-5	20 17 090	mm inch	276 10.87	225 8.86	552 21.73	346 13.62	530 20.87	4.4 0.17	7.0 0.28	12.0 0.47	24.0 0.94	kg lbs	4.3 9.5	2	60
TS 6 V0 NP	20 13 028	mm inch	276 10.87	225 8.86	562 22.13	310 12.20	570 22.44	4.5 0.18	7.0 0.28	12.0 0.47	24.0 0.94	kg lbs	4.8 10.6	1	50
TU 7	20 13 091	mm inch	276 10.87	225 8.86	570 22.44	279 10.98	600 23.62	4.3 0.17	7.0 0.28	12.0 0.47	24.0 0.94	kg lbs	5.2 11.5	1	50
TU 6 V0	20 13 129	mm inch	276 10.87	225 8.86	572 22.52	303 11.93	570 22.44	4.3 0.17	7.0 0.28	12.0 0.47	24.0 0.94	kg lbs	5.1 11.2	1	45
TS 7 C NP	20 13 273	mm inch	276 10.87	225 8.86	573 22.56	336 13.23	600 23.62	4.4 0.17	7.0 0.28	12.0 0.47	24.0 0.94	kg lbs	4.7 10.4	1	50
TS 7 L	20 17 504	mm inch	276 10.87	225 8.86	575 22.64	336 13.23	600 23.62	5.8 0.23	7.0 0.28	12.0 0.47	24.0 0.94	kg lbs	6.0 13.2	3	60
TU 5 V2	20 13 306	mm inch	276 10.87	225 8.86	589 23.19	334 13.15	550 21.65	4.3 0.17	7.0 0.28	12.0 0.47	24.0 0.94	kg lbs	5.2 11.5	1	50
TS 6 V1 NP	20 13 183	mm inch	276 10.87	225 8.86	592 23.31	348 13.70	570 22.44	4.5 0.18	7.0 0.28	12.0 0.47	24.0 0.94	kg lbs	5.2 11.5	1	45
TU 6 V1	20 13 094	mm inch	276 10.87	225 8.86	592 23.31	323 12.72	570 22.44	4.3 0.17	7.0 0.28	12.0 0.47	24.0 0.94	kg lbs	5.7 12.7	1	45
TU 7 V1	20 13 092	mm inch	276 10.87	225 8.86	594 23.39	303 11.93	600 23.62	4.3 0.17	7.0 0.28	12.0 0.47	24.0 0.94	kg lbs	5.4 12.0	1	40
TS 7 C V1 NP	20 13 274	mm inch	276 10.87	225 8.86	597 23.50	360 14.17	600 23.62	4.4 0.17	7.0 0.28	12.0 0.47	24.0 0.94	kg lbs	5.2 11.4	1	40
TS 8 C NP	20 13 239	mm inch	276 10.87	225 8.86	612 24.09	311 12.24	660 25.98	4.5 0.18	7.0 0.28	12.0 0.47	24.0 0.94	kg lbs	5.5 12.1	1	50
TS 8 L NP	20 13 141	mm inch	276 10.87	225 8.86	612 24.09	311 12.24	660 25.98	6.0 0.24	7.0 0.28	12.0 0.47	24.0 0.94	kg lbs	6.9 15.1	1	50
TU 7 V2	20 13 303	mm inch	276 10.87	225 8.86	626 24.65	335 13.19	600 23.62	4.3 0.17	7.0 0.28	12.0 0.47	24.0 0.94	kg lbs	5.5 12.1	1	40
TS 10 C	20 13 228	mm inch	276 10.87	225 8.86	626 24.65	369 14.53	600 23.62	4.5 0.18	7.0 0.28	12.0 0.47	24.0 0.94	kg lbs	5.4 11.9	2	45
TU 6 V2	20 13 307	mm inch	276 10.87	225 8.86	632 24.88	363 14.29	570 22.44	4.3 0.17	7.0 0.28	12.0 0.47	24.0 0.94	kg lbs	5.3 11.7	1	45
TU 7-5	20 13 208	mm inch	276 10.87	225 8.86	653 25.71	348 13.70	630 24.80	4.3 0.17	7.0 0.28	12.0 0.47	24.0 0.94	kg lbs	6.2 13.7	1	30
TU 7-5 V1	20 13 209	mm inch	276 10.87	225 8.86	678 26.69	373 14.69	630 24.80	4.3 0.17	7.0 0.28	12.0 0.47	24.0 0.94	kg lbs	6.6 14.6	1	30
TS 8 C V1 NP	20 13 240	mm inch	276 10.87	225 8.86	682 26.85	381 15.00	660 25.98	4.5 0.18	7.0 0.28	12.0 0.47	24.0 0.94	kg lbs	6.3 13.9	1	30
TU 7-5 V2	20 13 209	mm inch	276 10.87	225 8.86	703 27.68	398 15.67	630 24.80	4.3 0.17	7.0 0.28	12.0 0.47	24.0 0.94	kg lbs	6.9 15.2	1	not defined
TS 11 C	20 13 312	mm inch	276 10.87	225 8.86	706 27.80	362 14.25	690 27.17	4.0 0.16	7.0 0.28	12.0 0.47	24.0 0.94	kg lbs	6.1 13.4	1	40
TU 11	20 13 184	mm inch	276 10.87	225 8.86	706 27.80	354 13.94	690 27.17	4.3 0.17	7.0 0.28	12.0 0.47	24.0 0.94	kg lbs	7.0 15.4	1	30
TU 11 V1	20 13 185	mm inch	276 10.87	225 8.86	766 30.16	414 16.30	690 27.17	4.3 0.17	7.0 0.28	12.0 0.47	24.0 0.94	kg lbs	7.6 16.8	1	30

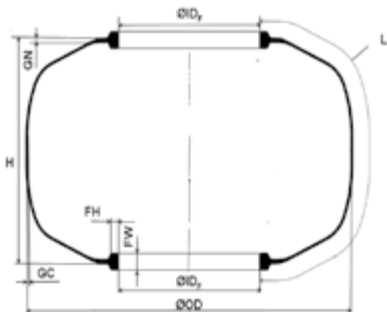
Hydraulic Type Bladders Application in Hydraulic Presses



Bladder Description	Article Number		(ID _U) Upper Foot ID	(ID _L) Lower Foot ID	(L) Length	(H) Height	(OD) Outside Dia- meter	(GC) Crown Gauge	(GN) Neck Gauge	(FH) Foot Height	(FW) Foot Width		Trimmed Weight	Surface Design	Packing Unit
Truck Tires															
HEB 20-0	20 17 111	mm	355	290	556	304	680	7.5	10.0	15.0	28.0	kg	8.4	4	16
		inch	13.98	11.42	21.89	11.97	26.77	0.30	0.39	0.59	1.10	lbs	18.5		
HEB 20-2	20 13 112	mm	355	290	634	322	730	7.5	10.0	15.0	28.0	kg	10.8	1	15
		inch	13.98	11.42	24.96	12.68	28.74	0.30	0.39	0.59	1.10	lbs	23.8		
HEB 20-3 NP	20 17 067	mm	355	290	688	399	780	7.5	10.0	15.0	28.0	kg	11.2	1	15
		inch	13.98	11.42	27.09	15.71	30.71	0.30	0.39	0.59	1.10	lbs	24.6		
HEB 20-2 V1	20 13 113	mm	355	290	694	382	730	7.5	10.0	15.0	28.0	kg	12.0	1	15
		inch	13.98	11.42	27.32	15.04	28.74	0.30	0.39	0.59	1.10	lbs	26.5		
HEB 20-3 V1 NP	20 17 101	mm	355	290	748	459	780	7.5	10.0	15.0	28.0	kg	12.2	1	15
		inch	13.98	11.42	29.45	18.07	30.71	0.30	0.39	0.59	1.10	lbs	26.9		
HEB 20-6 NP	20 17 036	mm	355	290	782	418	870	7.5	10.0	15.0	28.0	kg	13.8	1	16
		inch	13.98	11.42	30.79	16.46	34.25	0.30	0.39	0.59	1.10	lbs	30.4		
HEB 20-4	20 17 073	mm	355	290	800	536	740	7.5	10.0	15.0	28.0	kg	12.8	2	10
		inch	13.98	11.42	31.50	21.10	29.13	0.30	0.39	0.59	1.10	lbs	28.1		
HEB 20-6 V1 NP	20 17 625	mm	355	290	842	478	870	7.5	10.0	15.0	28.0	kg	14.8	1	13
		inch	13.98	11.42	33.15	18.82	34.25	0.30	0.39	0.59	1.10	lbs	32.7		
HEB 20-8 NP	20 13 044	mm	355	290	862	530	900	7.5	10.0	15.0	28.0	kg	15.3	1	13
		inch	13.98	11.42	33.94	20.87	35.43	0.30	0.39	0.59	1.10	lbs	33.7		
HEB 20-5	20 17 092	mm	355	290	882	564	840	7.5	10.0	15.0	28.0	kg	15.6	2	10
		inch	13.98	11.42	34.72	22.20	33.07	0.30	0.39	0.59	1.10	lbs	34.4		
HEB 20-8 V1 NP	20 13 045	mm	355	290	912	580	900	7.5	10.0	15.0	28.0	kg	15.7	1	10
		inch	13.98	11.42	35.91	22.83	35.43	0.30	0.39	0.59	1.10	lbs	34.6		
HEB 20-9	20 17 112	mm	355	290	934	608	850	7.5	10.0	15.0	28.0	kg	17.8	2	8
		inch	13.98	11.42	36.77	23.94	33.46	0.30	0.39	0.59	1.10	lbs	38.4		
HEB 20-8 V2 NP	20 13 046	mm	355	290	962	630	900	7.5	10.0	15.0	28.0	kg	17.9	1	8
		inch	13.98	11.42	37.87	24.80	35.43	0.30	0.39	0.59	1.10	lbs	39.4		
HEB 20-10	20 17 134	mm	355	290	1064	690	930	7.5	10.0	15.0	28.0	kg	20.2	2	4
		inch	13.98	11.42	41.89	27.17	36.61	0.30	0.39	0.59	1.10	lbs	44.4		



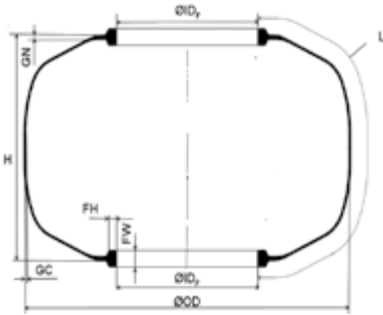
BOM Type Bladders Application in Bagomatic Presses



Bladder Description	Article Number		(ID) _F Foot ID	(L) Length	(H) Height	(OD) Outside Diameter	(GC) Crown Gauge	(GN) Neck Gauge	(FH) Foot Height	(FW) Foot Width		Trimmed Weight	Surface Design	Packing Unit	
Passenger / Light Truck Tires Radial															
RP 10-1 D	20 17 002	mm	158	358	265	320	4.5	6.0	11.0	21.0	kg	1.7	3	50	
		inch	6.22	14.09	10.43	12.60	0.18	0.24	0.43	0.83	lbs	3.7			
RP 10-3	20 17 001	mm	170	426	315	400	4.5	6.0	9.0	16.0	kg	2.1	3	50	
		inch	6.69	16.77	12.40	15.75	0.18	0.24	0.35	0.63	lbs	4.7			
RP 12-1 D	20 17 005	mm	207	370	227	420	4.5	7.0	11.0	23.0	kg	2.4	3	50	
		inch	8.15	14.57	8.94	16.54	0.18	0.28	0.43	0.91	lbs	5.3			
RP 13 TM	20 17 052	mm	225	304	204	380	4.5	7.0	12.0	24.0	kg	2.0	3	60	
		inch	8.86	11.97	8.03	14.96	0.18	0.28	0.47	0.94	lbs	4.4			
B 13-0 C NP	20 13 250	mm	225	360	237	420	4.5	7.0	12.0	24.0	kg	2.5	1	100	
		inch	8.86	14.17	9.33	16.54	0.18	0.28	0.47	0.94	lbs	5.5			
B 0 NP	20 13 062	mm	225	388	200	510	4.5	7.0	12.0	24.0	kg	3.0	1	60	
		inch	8.86	15.28	7.87	20.08	0.18	0.28	0.47	0.94	lbs	6.6			
BU 1	20 13 261	mm	225	394	199	470	4.5	7.0	12.0	24.0	kg	2.5	1	100	
		inch	8.86	15.51	7.83	18.50	0.18	0.28	0.47	0.94	lbs	5.5			
B 13-2 C NP	20 13 232	mm	225	403	274	460	4.5	7.0	12.0	24.0	kg	2.8	1	100	
		inch	8.86	15.85	10.79	18.11	0.18	0.28	0.47	0.94	lbs	6.2			
RP 13-2	20 17 074	mm	225	406	315	420	4.5	7.0	12.0	24.0	kg	2.7	5	90	
		inch	8.86	15.98	12.40	16.54	0.18	0.28	0.47	0.94	lbs	6.0			
RP 13-3	20 17 029	mm	225	430	312	413	4.7	7.0	12.0	23.5	kg	3.0	3	100	
		inch	8.86	16.93	12.28	16.26	0.19	0.28	0.47	0.93	lbs	6.5			
BU 2	20 13 288	mm	225	432	219	490	4.3	7.0	12.0	24.0	kg	3.1	1	100	
		inch	8.86	17.01	8.62	19.29	0.17	0.28	0.47	0.94	lbs	6.8			
RP 13-4	20 17 007	mm	225	450	335	413	7.5	8.0	11.0	23.0	kg	4.4	4	20	
		inch	8.86	17.72	13.19	16.26	0.30	0.31	0.43	0.91	lbs	9.7			
RP 13-4 D NP	20 17 021	mm	225	458	347	430	4.5	7.0	12.0	24.0	kg	3.1	1	100	
		inch	8.86	18.03	13.66	16.93	0.18	0.28	0.47	0.94	lbs	6.8			
BU 3	20 13 151	mm	225	458	236	500	4.3	7.0	12.0	24.0	kg	3.3	1.1	80	
		inch	8.86	18.02	9.29	19.69	0.17	0.28	0.47	0.94	lbs	7.3			
B 3 C NP	20 13 179	mm	225	458	286	500	4.4	7.0	12.0	24.0	kg	3.9	1	80	
		inch	8.86	18.03	11.26	19.69	0.17	0.28	0.47	0.94	lbs	8.6			
RP 13-5	20 17 010	mm	225	480	335	450	6.0	8.0	12.5	23.5	kg	4.0	3	50	
		inch	8.86	18.90	13.19	17.72	0.24	0.31	0.49	0.93	lbs	8.9			
B 4 NP	20 17 110	mm	225	503	316	520	4.4	7.0	12.0	24.0	kg	3.6	1	80	
		inch	8.86	19.80	12.44	20.47	0.17	0.28	0.47	0.94	lbs	8.0			
BU 4	20 13 149	mm	225	502	263	520	4.3	7.0	12.0	24.0	kg	4.3	1	80	
		inch	8.86	19.76	10.35	20.47	0.17	0.28	0.47	0.94	lbs	9.6			
BU 4 V1	20 13 234	mm	225	526	287	520	4.3	7.0	12.0	24.0	kg	4.3	1	60	
		inch	8.86	20.71	11.30	20.47	0.17	0.28	0.47	0.94	lbs	9.6			
RP 13-7	20 17 013	mm	225	536	395	460	6.0	8.0	12.5	23.5	kg	4.6	3	40	
		inch	8.86	21.10	15.55	18.11	0.24	0.31	0.49	0.93	lbs	10.2			
RP 13-9	20 17 011	mm	225	607	490	467	7.2	7.2	12.5	23.5	kg	6.4	3	30	
		inch	8.86	23.90	19.29	18.39	0.28	0.28	0.49	0.93	lbs	14.2			
13-11.8 DK 38428	20 14 200	mm	238	343	223	419	4.4	6.4	12.7	24.5	kg	2.7	3	60	
		inch	9.38	13.50	8.77	16.50	0.18	0.25	0.50	0.97	lbs	5.9			
13-12.3 DK 36745	20 14 252	mm	238	356	215	465	4.4	6.4	12.7	24.0	kg	2.5	3	60	
		inch	9.38	14.00	8.47	18.30	0.18	0.25	0.50	0.94	lbs	5.6			

Bladder Description	Article Number		(ID _p) Foot ID	(L) Length	(H) Height	(OD) Outside Dia- meter	(GC) Crown Gauge	(GN) Neck Gauge	(FH) Foot Height	(FW) Foot Width		Trimmed Weight	Surface Design	Packing Unit
13-13.0 DK 59675	20 14 290	mm inch	238 9.38	374 14.71	235 9.27	450 17.70	4.4 0.18	6.4 0.25	12.7 0.50	24.5 0.97	kg lbs	2.9 6.5	2	60
B 2 DK 238	20 13 136	mm inch	238 9.37	410 16.14	267 10.49	470 18.50	4.3 0.17	7.0 0.28	12.7 0.50	24.5 0.96	kg lbs	3.1 6.8	1	60
BU 3 DK 251	20 13 152	mm inch	251 9.88	432 17.01	236 9.29	500 19.69	4.3 0.17	7.0 0.28	12.7 0.50	22.2 0.87	kg lbs	3.3 7.3	1.1	50
BU 4 DK 251	20 13 134	mm inch	251 9.88	476 18.74	263 10.35	520 20.47	4.3 0.17	7.0 0.28	12.7 0.50	22.2 0.87	kg lbs	3.9 8.6	1	60
BU 4 DK 276	20 13 135	mm inch	276 10.87	451 17.76	263 10.35	520 20.47	4.3 0.17	7.0 0.28	12.7 0.50	22.2 0.88	kg lbs	3.8 8.3	1	60
B 5 NP	20 13 003	mm inch	276 10.87	470 18.50	308 12.13	550 21.65	4.5 0.18	7.0 0.28	12.0 0.47	24.0 0.94	kg lbs	4.0 8.8	1	80
BU 5	20 13 067	mm inch	276 10.87	474 18.64	244 9.61	550 21.65	4.3 0.17	7.0 0.28	12.0 0.47	24.0 0.94	kg lbs	4.1 9.1	1	80
BU 5 DK	20 13 137	mm inch	276 10.87	474 18.64	244 9.61	550 21.65	4.3 0.17	7.0 0.28	12.7 0.50	22.2 0.87	kg lbs	4.1 9.0	1	80
B 5 V1 NP	20 13 005	mm inch	276 10.87	494 19.45	332 13.07	550 21.65	4.5 0.18	7.0 0.28	12.0 0.47	24.0 0.94	kg lbs	4.1 9.0	1	80
BU 5 V1	20 13 069	mm inch	276 10.87	498 19.59	268 10.55	550 21.65	4.3 0.17	7.0 0.28	12.0 0.47	24.0 0.94	kg lbs	4.4 9.6	1	80
BU 5 DK V1	20 13 138	mm inch	276 10.87	498 19.59	268 10.55	550 21.65	4.3 0.17	7.0 0.28	12.7 0.50	22.2 0.87	kg lbs	4.3 9.4	1	80
BU 6 DK	20 13 130	mm inch	276 10.87	506 19.93	263 10.35	570 22.44	4.3 0.17	7.0 0.28	12.7 0.50	22.2 0.87	kg lbs	4.5 9.8	1	60
BU 6 DK V0	20 13 131	mm inch	276 10.87	546 21.50	303 11.93	570 22.44	4.3 0.17	7.0 0.28	12.7 0.50	22.2 0.87	kg lbs	5.1 11.2	1	45
BU 7 DK	20 13 186	mm inch	276 10.87	545 21.46	279 10.98	600 23.62	4.3 0.17	7.0 0.28	12.7 0.50	22.2 0.87	kg lbs	4.5 9.9	1	60
B 7 C NP	20 13 275	mm inch	276 10.87	548 21.57	336 13.23	600 23.62	4.4 0.17	7.0 0.28	12.0 0.47	24.0 0.94	kg lbs	4.6 10.1	1	40
BU 7 DK V1	20 13 182	mm inch	276 10.87	569 22.38	303 11.93	600 23.62	4.3 0.17	7.0 0.28	12.7 0.50	22.2 0.87	kg lbs	5.8 12.8	1	40
B 7 C V1 NP	20 13 276	mm inch	276 10.87	572 22.52	360 14.17	600 23.62	4.4 0.17	7.0 0.28	12.0 0.47	24.0 0.94	kg lbs	5.2 11.4	1	30
B 15-6	20 17 910	mm inch	276 10.87	582 22.91	449 17.68	550 21.65	5.7 0.22	7.0 0.28	12.0 0.47	24.0 0.94	kg lbs	5.7 12.6	3	40
B 8 C NP	20 13 237	mm inch	276 10.87	586 23.07	311 12.24	660 25.98	4.5 0.18	7.0 0.28	12.0 0.47	24.0 0.94	kg lbs	5.4 11.9	1	40
BU 7 DK V2	20 13 311	mm inch	276 10.87	601 23.64	335 13.19	600 23.62	4.3 0.17	7.0 0.28	12.7 0.50	22.2 0.87	kg lbs	5.8 12.8	1	not defined
15-22.6 DK 36425	20 14 288	mm inch	276 10.88	621 24.47	426 16.78	605 23.80	6.4 0.25	6.4 0.25	12.7 0.50	22.2 0.88	kg lbs	6.9 15.3	2	30
B 8 C V1 NP	20 13 238	mm inch	276 10.87	656 25.83	381 15.00	660 25.98	4.5 0.18	7.0 0.28	12.0 0.47	24.0 0.94	kg lbs	6.1 13.4	1	30
B 15-8	20 17 079	mm inch	276 10.87	666 26.22	459 18.07	620 24.41	5.7 0.22	7.0 0.28	12.0 0.47	24.0 0.94	kg lbs	7.4 16.2	2	20
B 15-7 NP	20 13 025	mm inch	276 10.87	700 27.56	392 15.43	700 27.56	6.0 0.24	7.0 0.28	12.7 0.50	22.5 0.89	kg lbs	7.8 17.2	1	30
B 15-7 V1 NP	20 13 026	mm inch	276 10.87	820 32.28	512 20.16	700 27.56	6.0 0.24	7.0 0.28	12.7 0.50	22.5 0.89	kg lbs	10.0 22.1	1	30
BE 16-1	20 17 935	mm inch	287 11.30	455 17.91	347 13.66	570 22.44	5.7 0.22	9.5 0.37	12.5 0.49	17.5 0.69	kg lbs	4.6 10.1	4	45
BU 5 301	20 13 070	mm inch	301 11.85	449 17.66	244 9.61	550 21.65	4.3 0.17	7.0 0.28	12.0 0.47	24.0 0.94	kg lbs	4.4 9.6	1	50
BU 5 V1 301	20 13 072	mm inch	301 11.85	473 18.60	268 10.55	550 21.65	4.3 0.17	7.0 0.28	12.0 0.47	24.0 0.94	kg lbs	4.2 9.3	1	45
16-21.9 DK 65320	20 14 334	mm inch	302 11.88	604 23.78	366 14.41	620 24.41	5.8 0.23	6.4 0.25	12.7 0.50	22.2 0.88	kg lbs	6.9 15.3	3	30
BU 5 310	20 13 071	mm inch	310 12.20	440 17.30	244 9.61	550 21.65	4.3 0.17	7.0 0.28	12.0 0.47	24.0 0.94	kg lbs	4.3 9.6	1	80
BU 5 V1 310	20 13 073	mm inch	310 12.20	464 18.25	268 10.55	550 21.65	4.3 0.17	7.0 0.28	12.0 0.47	24.0 0.94	kg lbs	4.4 9.8	1	45
BU 6 310	20 13 095	mm inch	310 12.20	472 18.58	263 10.35	570 22.44	4.3 0.17	7.0 0.28	12.0 0.47	24.0 0.94	kg lbs	4.4 9.7	1	60
BU 6 V1 310	20 13 096	mm inch	310 12.20	532 20.94	323 12.72	570 22.44	4.3 0.17	7.0 0.28	12.0 0.47	24.0 0.94	kg lbs	4.9 10.8	1	45

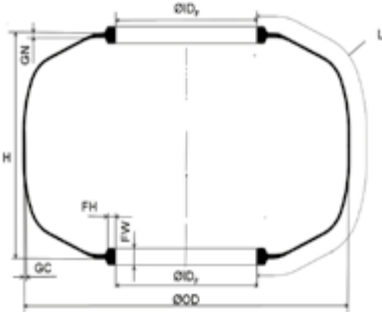
BOM Type Bladders Application in Bagomatic Presses



Bladder Description	Article Number		(ID) _F Foot ID	(L) Length	(H) Height	(OD) Outside Dia- meter	(GC) Crown Gauge	(GN) Neck Gauge	(FH) Foot Height	(FW) Foot Width		Trimmed Weight	Surface Design	Packing Unit	
Passenger / Light Truck Tires Bias															
9-15.8 DK 4793	20 14 294	mm	140	436	367	298	6.4	9.5	12.7	23.8	kg	2.5	4	40	
		inch	5.50	17.18	14.44	11.75	0.25	0.38	0.50	0.94	lbs	5.5			
10-14.6 DK 5484	20 14 211	mm	165	406	352	254	6.4	9.5	12.7	23.8	kg	2.7	2	50	
		inch	6.50	15.98	13.88	10.00	0.25	0.38	0.50	0.94	lbs	6.0			
10-16.5 DK 4408	20 14 102	mm	165	453	392	302	6.4	9.5	12.7	23.8	kg	3.2	4	36	
		inch	6.50	17.84	15.44	11.88	0.25	0.38	0.50	0.94	lbs	7.0			
10-19.8 DK 4374	20 14 179	mm	165	539	478	318	6.4	9.5	12.7	23.8	kg	3.7	4	25	
		inch	6.50	21.22	18.81	12.50	0.25	0.38	0.50	0.94	lbs	8.2			
12-10.5 DK 4976	20 14 237	mm	216	302	244	295	6.4	11.9	12.7	25.4	kg	2.3	4	36	
		inch	8.50	11.90	9.59	11.63	0.25	0.47	0.50	1.00	lbs	5.1			
12-12.2 DK 12099	20 14 168	mm	216	345	288	302	6.4	11.9	12.7	25.4	kg	2.7	2	40	
		inch	8.50	13.58	11.34	11.88	0.25	0.47	0.50	1.00	lbs	6.0			
12-13.4 DK 34618	20 14 177	mm	216	374	317	295	6.4	11.9	12.7	25.4	kg	2.9	2	30	
		inch	8.50	14.74	12.47	11.63	0.25	0.47	0.50	1.00	lbs	6.4			
12-16.2 DK 2767	20 14 145	mm	216	446	387	295	6.4	11.9	12.7	25.4	kg	3.4	4	30	
		inch	8.50	17.58	15.25	11.63	0.25	0.47	0.50	1.00	lbs	7.5			
12-18.5 DK 4413	20 14 152	mm	216	505	444	343	6.4	11.9	12.7	25.4	kg	3.9	4	36	
		inch	8.50	19.88	17.47	13.50	0.25	0.47	0.50	1.00	lbs	8.6			
12-26.0 DK 4319	20 14 165	mm	216	694	628	381	6.4	11.9	12.7	25.4	kg	5.6	4	36	
		inch	8.50	27.34	24.72	15.00	0.25	0.47	0.50	1.00	lbs	12.3			
13-13.6 DK 4898	20 14 154	mm	238	370	337	329	6.4	11.9	12.7	25.4	kg	3.6	3	36	
		inch	9.37	14.57	13.27	12.95	0.25	0.47	0.50	1.00	lbs	7.9			
13-16.8 DK 4282	20 14 150	mm	238	472	406	329	6.4	11.9	12.7	25.4	kg	3.9	2	36	
		inch	9.38	18.59	15.97	12.94	0.25	0.47	0.50	1.00	lbs	8.6			
14-9.2 DK 23986	20 14 193	mm	251	281	219	324	6.4	9.5	12.7	22.2	kg	2.3	2	36	
		inch	9.88	11.08	8.63	12.75	0.25	0.38	0.50	0.88	lbs	5.1			
14-15.4 DK 32415	20 14 171	mm	251	438	358	401	6.0	9.5	12.7	22.2	kg	3.6	2	36	
		inch	9.88	17.26	14.10	15.80	0.24	0.38	0.50	0.88	lbs	7.9			
14-15.8 DK 42758	20 14 256	mm	251	445	301	485	4.4	6.4	12.7	22.2	kg	3.4	3	60	
		inch	9.88	17.50	11.86	19.10	0.18	0.25	0.50	0.88	lbs	7.5			

Bladder Description	Article Number		(ID _F) Foot ID	(L) Length	(H) Height	(OD) Outside Dia- meter	(GC) Crown Gauge	(GN) Neck Gauge	(FH) Foot Height	(FW) Foot Width		Trimmed Weight	Surface Design	Packing Unit
Passenger / Light Truck Tires Bias														
14-16.4 DK 29634	20 14 170	mm	251	463	381	419	6.4	9.5	12.7	22.2	kg	4.4	2	40
		inch	9.88	18.25	15.00	16.50	0.25	0.38	0.50	0.88	lbs	9.6		
14-17.5 DK 7585	20 14 105	mm	251	492	419	376	6.4	9.5	12.7	22.2	kg	4.8	2	40
		inch	9.88	19.36	16.50	14.82	0.25	0.38	0.50	0.88	lbs	10.6		
14-19.1 DK 12270	20 14 107	mm	251	532	457	376	6.4	9.5	12.7	22.2	kg	4.4	2	36
		inch	9.88	20.96	18.00	14.82	0.25	0.38	0.50	0.88	lbs	9.7		
14-21.3 DK 26260	20 14 121	mm	251	566	533	402	6.4	11.9	12.7	24.6	kg	5.9	3	20
		inch	9.88	22.28	20.98	15.83	0.25	0.47	0.50	0.97	lbs	13.0		
15-8.4 DK 21130	20 14 109	mm	276	262	200	349	6.4	9.5	12.7	19.1	kg	2.2	3	40
		inch	10.88	10.32	7.88	13.75	0.25	0.38	0.50	0.75	lbs	4.9		
15-11.8 DK 12123	20 14 207	mm	276	347	276	402	6.4	9.5	12.7	19.1	kg	3.1	2	40
		inch	10.88	13.68	10.88	15.82	0.25	0.38	0.50	0.75	lbs	6.9		
15-14.6 DK 12126	20 14 128	mm	276	418	346	402	6.4	9.5	12.7	19.1	kg	4.0	2	40
		inch	10.88	16.48	13.63	15.82	0.25	0.38	0.50	0.75	lbs	8.8		
15-17.6 DK 7804	20 14 162	mm	276	496	427	365	6.4	9.5	12.7	22.2	kg	4.5	2	20
		inch	10.88	19.54	16.81	14.38	0.25	0.38	0.50	0.88	lbs	9.9		
15-19.5 DK 2646	20 14 331	mm	276	543	473	402	6.4	9.5	12.7	22.2	kg	5.4	2	40
		inch	10.88	21.39	18.63	15.82	0.25	0.38	0.50	0.88	lbs	11.9		
15-22.4 DK 1282	20 14 130	mm	276	616	546	402	7.9	9.5	12.7	22.2	kg	7.4	1	20
		inch	10.88	24.26	21.50	15.82	0.31	0.38	0.50	0.88	lbs	16.3		
16-9.2 DK 20428	20 14 194	mm	302	282	216	381	6.4	9.5	12.7	22.2	kg	2.6	2	36
		inch	11.88	11.09	8.50	15.00	0.25	0.38	0.50	0.88	lbs	5.8		
16-16.7 DK 6954	20 14 104	mm	302	472	406	394	6.4	9.5	12.7	22.2	kg	5.0	2	40
		inch	11.88	18.58	16.00	15.50	0.25	0.38	0.50	0.88	lbs	11.0		
16-17.5 DK 27189	20 14 039	mm	302	491	368	508	7.9	9.5	12.7	22.2	kg	6.4	3	40
		inch	11.88	19.34	14.50	20.00	0.31	0.38	0.50	0.88	lbs	14.1		
16-19.3 DK 6931	20 14 103	mm	302	542	476	406	6.4	9.5	12.7	22.2	kg	5.7	2	20
		inch	11.88	21.36	18.75	16.00	0.25	0.38	0.50	0.88	lbs	12.6		

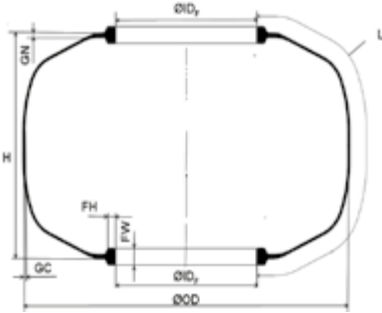
BOM Type Bladders Application in Bagomatic Presses



Bladder Description	Article Number		(ID) _F Foot ID	(L) Length	(H) Height	(OD) Outside Diameter	(GC) Crown Gauge	(GN) Neck Gauge	(FH) Foot Height	(FW) Foot Width		Trimmed Weight	Surface Design	Packing Unit
Truck Tires Radial														
B 20-0	20 17 104	mm	355	524	304	680	7.5	10.0	15.0	28.0	kg	8.1	4	16
		inch	13.98	20.63	11.97	26.77	0.30	0.39	0.59	1.10	lbs	17.9		
B 20-1	20 17 027	mm	355	558	338	700	7.0	10.0	15.0	27.0	kg	8.4	3	15
		inch	13.98	21.97	13.31	27.56	0.28	0.39	0.59	1.06	lbs	18.6		
B 20-1 V1	20 17 022	mm	355	608	388	700	7.0	10.0	15.0	27.0	kg	9.4	3	15
		inch	13.98	23.94	15.28	27.56	0.28	0.39	0.59	1.06	lbs	20.8		
RP 20-3	20 17 518	mm	355	632	500	630	8.0	10.0	15.0	27.0	kg	9.9	3	14
		inch	13.98	24.88	19.69	24.80	0.31	0.39	0.59	1.06	lbs	21.8		
B 20-2	20 13 114	mm	355	602	322	730	7.5	10.0	15.0	28.0	kg	10.2	1	15
		inch	13.98	23.70	12.68	28.74	0.30	0.39	0.59	1.10	lbs	22.4		
B 20-2 V1	20 13 115	mm	355	662	382	730	7.5	10.0	15.0	28.0	kg	11.6	1	15
		inch	13.98	26.06	15.04	28.74	0.30	0.39	0.59	1.10	lbs	25.6		
B 20-3 NP	20 17 070	mm	355	656	399	780	7.5	10.0	15.0	28.0	kg	10.8	1	15
		inch	13.98	25.83	15.71	30.71	0.30	0.39	0.59	1.10	lbs	23.8		
B 20-3 V1 NP	20 17 100	mm	355	716	459	780	7.5	10.0	15.0	28.0	kg	12.0	1	15
		inch	13.98	28.19	18.07	30.71	0.30	0.39	0.59	1.10	lbs	26.5		
B 20-6 NP	20 17 023	mm	355	750	418	870	7.5	10.0	15.0	28.0	kg	13.7	1	16
		inch	13.98	29.53	16.46	34.25	0.30	0.39	0.59	1.10	lbs	30.3		
RP 20-5	20 17 521	mm	355	750	603	673	8.0	10.0	15.0	27.0	kg	12.0	3	12
		inch	13.98	29.53	23.74	26.50	0.31	0.39	0.59	1.06	lbs	26.5		
B 20-4	20 17 081	mm	355	768	536	740	7.5	10.0	15.0	28.0	kg	12.5	2	8
		inch	13.98	30.24	21.10	29.13	0.30	0.39	0.59	1.10	lbs	27.4		
B 20-6 V1 NP	20 17 080	mm	355	810	478	870	7.5	10.0	15.0	28.0	kg	15.1	1	13
		inch	13.98	31.89	18.82	34.25	0.30	0.39	0.59	1.10	lbs	33.2		
B 20-7 A	20 17 024	mm	355	810	602	800	7.5	11.0	15.0	28.0	kg	15.4	2	10
		inch	13.98	31.89	23.70	31.50	0.30	0.43	0.59	1.10	lbs	34.0		
B 20-8 NP	20 13 047	mm	355	830	530	900	7.5	10.0	15.0	28.0	kg	14.8	1	13
		inch	13.98	32.68	20.87	35.43	0.30	0.39	0.59	1.10	lbs	32.6		
B 20-5	20 17 093	mm	355	850	564	840	7.5	10.0	15.0	28.0	kg	15.4	2	10
		inch	13.98	33.46	22.20	33.07	0.30	0.39	0.59	1.10	lbs	34.0		
B 20-8 V1 NP	20 13 048	mm	355	880	580	900	7.5	10.0	15.0	28.0	kg	16.2	1	10
		inch	13.98	34.65	22.83	35.43	0.30	0.39	0.59	1.10	lbs	35.6		
B 20-9	20 17 087	mm	355	902	608	850	7.5	10.0	15.0	28.0	kg	17.0	2	6
		inch	13.98	35.51	23.94	33.46	0.30	0.39	0.59	1.10	lbs	37.5		
B 20-8 V2 NP	20 13 049	mm	355	930	630	900	7.5	10.0	15.0	28.0	kg	17.2	1	8
		inch	13.98	36.61	24.80	35.43	0.30	0.39	0.59	1.10	lbs	37.9		
B 20-10	20 17 086	mm	355	1032	690	930	7.5	10.0	15.0	28.0	kg	19.7	2	8
		inch	13.98	40.63	27.17	36.61	0.30	0.39	0.59	1.10	lbs	43.3		
20-26.5 DK 46666	20 14 261	mm	384	710	505	787	6.9	9.5	12.7	25.4	kg	14.2	3	10
		inch	15.13	27.94	19.88	31.00	0.27	0.38	0.50	1.00	lbs	31.3		

Bladder Description	Article Number		(ID) _F Foot ID	(L) Length	(H) Height	(OD) Outside Dia- meter	(GC) Crown Gauge	(GN) Neck Gauge	(FH) Foot Height	(FW) Foot Width		Trimmed Weight	Surface Design	Packing Unit
Truck Tires Bias														
19.5-30.3 DK 1478	20 14 138	mm inch	356 14.00	817 32.18	740 29.13	512 20.17	8.4 0.33	14.4 0.57	12.7 0.50	30.2 1.19	kg lbs	15.4 34.0	2	12
20-22.8 DK 46055	20 14 112	mm inch	384 15.13	616 24.24	524 20.63	584 23.00	7.9 0.31	12.7 0.50	12.7 0.50	28.6 1.13	kg lbs	10.1 22.3	2	15
20-24.0 R	20 64 086	mm inch	384 15.12	635 25.00	547 21.55	572 22.50	9.5 0.37	12.7 0.50	12.7 0.50	27.6 1.09	kg lbs	12.1 26.7	2	10
20-25.0 RT	20 64 543	mm inch	384 15.12	660 26.00	572 22.53	572 22.50	7.0 0.28	12.7 0.50	12.7 0.50	27.6 1.09	kg lbs	14.2 31.3	4	10
20-25.3 DK 4969	20 14 326	mm inch	384 15.13	679 26.75	606 23.88	572 22.50	7.9 0.31	12.7 0.50	12.7 0.50	28.6 1.13	kg lbs	11.6 25.6	2	15
20-26.0 RT	20 64 542	mm inch	384 15.12	686 27.01	597 23.50	572 22.53	7.0 0.28	12.7 0.50	12.7 0.50	27.6 1.09	kg lbs	11.2 24.7	4	10
20-26.0 R	20 64 087	mm inch	384 15.12	686 27.00	597 23.52	572 22.50	9.5 0.37	12.7 0.50	12.7 0.50	27.6 1.09	kg lbs	13.0 28.5	2	10
20-28.0 R	20 64 088	mm inch	384 15.12	737 29.00	647 25.48	572 22.53	9.5 0.37	12.7 0.50	12.7 0.50	27.6 1.09	kg lbs	14.0 30.8	2	10
14.00-20	20 07 034	mm inch	384 15.12	874 34.41	744 29.29	710 27.95	9.0 0.35	10.0 0.39	13.0 0.51	25.0 0.98	kg lbs	18.9 41.7	4	10
20-33.1 DK 3476	20 14 147	mm inch	384 15.13	888 34.98	803 31.63	597 23.50	7.9 0.31	12.7 0.50	12.7 0.50	28.6 1.13	kg lbs	17.6 38.8	4	12
20-37.4 DK 3330	20 14 210	mm inch	384 15.13	998 39.28	908 35.75	635 25.00	7.9 0.31	12.7 0.50	12.7 0.50	28.6 1.13	kg lbs	17.7 39.0	4	12
11-70-22.5	20 07 038	mm inch	422 16.61	624 24.57	526 20.71	655 25.79	11.0 0.43	12.0 0.47	13.0 0.51	26.0 1.02	kg lbs	16.5 36.4	4	10
295-70-22.5	20 07 037	mm inch	422 16.61	656 25.83	556 21.89	676 26.61	11.0 0.43	12.0 0.47	13.0 0.51	26.0 1.02	kg lbs	16.7 36.8	4	10
13-22.5	20 07 039	mm inch	422 16.61	756 29.76	628 24.72	740 29.13	12.0 0.47	12.0 0.47	13.0 0.51	26.0 1.02	kg lbs	22.8 50.3	4	10
15-22.5	20 07 057	mm inch	422 16.61	800 31.50	687 27.05	741 29.17	11.0 0.43	13.0 0.51	13.0 0.51	26.0 1.02	kg lbs	22.3 49.2	4	not defined
16-22.5	20 07 056	mm inch	422 16.61	852 33.54	717 28.23	773 30.43	11.0 0.43	13.0 0.51	13.0 0.51	26.0 1.02	kg lbs	24.3 53.6	4	10
22.5-34.8 DK 1443	20 14 133	mm inch	432 17.00	933 36.72	856 33.69	592 23.29	8.4 0.33	14.4 0.57	12.7 0.50	30.2 1.19	kg lbs	19.6 43.2	2	12
22.5-23.0 RT	20 64 110	mm inch	434 17.09	610 24.00	522 20.56	620 24.41	7.0 0.28	12.7 0.50	12.7 0.50	27.6 1.09	kg lbs	10.8 23.8	4	10

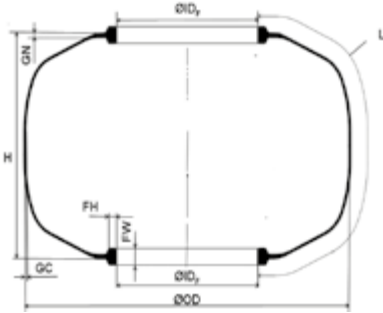
BOM Type Bladders Application in Bagomatic Presses



Bladder Description	Article Number		(ID _f) Foot ID	(L) Length	(H) Height	(OD) Outside Dia- meter	(GC) Crown Gauge	(GN) Neck Gauge	(FH) Foot Height	(FW) Foot Width		Trimmed Weight	Surface Design	Packing Unit	
OTR Tires Bias / Radial															
B 25-1 V1	20 13 314	mm	465	786	558	900	11.0	16.0	16.0	38.0	kg		1	not defined	
		inch	18.31	30.94	21.97	35.43	0.43	0.63	0.63	1.50	lbs				
B 25-1 V2	20 13 315	mm	465	836	608	900	11.0	16.0	16.0	38.0	kg		1	not defined	
		inch	18.31	32.91	23.94	35.43	0.43	0.63	0.63	1.50	lbs				
B 25-2	20 13 291	mm	465	940	598	1100	11.0	16.0	16.0	38.0	kg	31.9	1	6	
		inch	18.31	37.01	23.54	43.31	0.43	0.63	0.63	1.50	lbs	70.3			
B 25-2 V1	20 16 292	mm	465	1100	748	1100	11.0	16.0	16.0	38.0	kg	40.3	1	4	
		inch	18.31	43.31	29.45	43.31	0.43	0.63	0.63	1.50	lbs	88.8			
B 25-4	20 13 293	mm	465	1351	958	1250	11.0	16.0	16.0	38.0	kg	56.0	1	4	
		inch	18.31	53.19	37.72	49.21	0.43	0.63	0.63	1.50	lbs	123.5			
B 25-4 V1	20 13 294	mm	465	1551	1158	1250	11.0	16.0	16.0	38.0	kg	69.0	1	not defined	
		inch	18.31	61.06	45.59	49.21	0.43	0.63	0.63	1.50	lbs	152.1			
RP 26-3	20 17 056	mm	530	748	622	800	8.0	10.0	15.0	28.0	kg	15.6	4	5	
		inch	20.87	29.45	24.49	31.50	0.31	0.39	0.59	1.10	lbs	34.4			
BOM 2607	20 17 053	mm	530	1120	1036	750	10.0	11.0	15.0	28.0	kg	26.6	4	5	
		inch	20.87	44.09	40.79	29.53	0.39	0.43	0.59	1.10	lbs	58.6			
RP 30-3	20 17 057	mm	600	960	744	1060	8.0	10.0	15.0	28.0	kg	25.0	4	8	
		inch	23.62	37.80	29.29	41.73	0.31	0.39	0.59	1.10	lbs	55.1			
RP 30-3 V1	20 17 076	mm	600	1260	1044	1060	8.0	10.0	15.0	28.0	kg	34.0	4	5	
		inch	23.62	49.61	41.10	41.73	0.31	0.39	0.59	1.10	lbs	75.0			
B 38-3	20 13 298	mm	827	978	785	1300	11.0	11.0	12.0	26.0	kg		1	not defined	
		inch	32.56	38.50	30.91	51.18	0.43	0.43	0.47	1.02	lbs				
B 38-3 V1	20 13 299	mm	827	1088	895	1300	11.0	11.0	12.0	26.0	kg		1	not defined	
		inch	32.56	42.83	35.24	51.18	0.43	0.43	0.47	1.02	lbs				
RP 38-4	20 17 065	mm	838	892	750	1160	10.0	10.0	13.0	28.0	kg	25.9	4	4	
		inch	32.99	35.12	29.53	45.67	0.39	0.39	0.51	1.10	lbs	57.0			
RP 38-4 V1	20 17 109	mm	838	1236	1094	1160	10.0	10.0	13.0	28.0	kg	45.5	4	4	
		inch	32.99	48.66	43.07	45.67	0.39	0.39	0.51	1.10	lbs	100.3			

Bladder Description	Article Number		(ID _F) Foot ID	(L) Length	(H) Height	(OD) Outside Dia- meter	(GC) Crown Gauge	(GN) Neck Gauge	(FH) Foot Height	(FW) Foot Width		Trimmed Weight	Surface Design	Packing Unit
OTR Tires Bias														
20-33.5	20 64 117	mm	384	876	782	572	11.4	12.7	12.7	27.6	kg	18.5	4	4
		inch	15.12	34.50	30.79	22.50	0.45	0.50	0.50	1.09	lbs	40.8		
20-37.6	20 64 109	mm	384	980	890	630	12.0	12.7	12.7	27.6	kg	20.3	4	4
		inch	15.12	38.60	35.04	24.80	0.47	0.50	0.50	1.09	lbs	44.8		
23-39.8 H	20 64 119	mm	430	1036	1015	730	12.0	12.7	12.7	27.6	kg	29.7	4	10
		inch	16.93	40.80	39.96	28.74	0.47	0.50	0.50	1.09	lbs	65.5		
58	20 16 030	mm	442	790	510	880	14.0	14.0	16.0	34.0	kg	30.5	6	5
		inch	17.40	31.10	20.08	34.65	0.55	0.55	0.63	1.34	lbs	67.2		
58 A	20 16 056	mm	442	940	660	880	14.0	14.0	16.0	34.0	kg	36.2	6	5
		inch	17.40	37.01	25.98	34.65	0.55	0.55	0.63	1.34	lbs	79.8		
58 B	20 16 057	mm	442	1010	730	880	14.0	14.0	16.0	34.0	kg	39.5	6	5
		inch	17.40	39.76	28.74	34.65	0.55	0.55	0.63	1.34	lbs	87.1		
25-37.5	20 64 091	mm	465	985	884	760	16.0	20.0	16.0	35.0	kg	42.0	4	4
		inch	18.31	38.76	34.80	29.92	0.63	0.79	0.63	1.38	lbs	92.6		
25-39.3	20 13 216	mm	465	1031	884	850	16.0	20.0	16.0	38.0	kg	42.0	2	4
		inch	18.31	40.59	34.80	33.46	0.63	0.79	0.63	1.50	lbs	92.6		
25-42.5	20 64 092	mm	465	1112	976	760	16.0	20.0	16.0	35.0	kg	45.5	4	4
		inch	18.31	43.76	38.43	29.92	0.63	0.79	0.63	1.38	lbs	100.3		
25-44.5	20 13 221	mm	465	1162	1015	850	16.0	20.0	16.0	38.0	kg	45.5	2	3
		inch	18.31	45.75	39.96	33.46	0.63	0.79	0.63	1.50	lbs	100.3		
25-47.2	20 13 218	mm	465	1231	1084	850	16.0	20.0	16.0	38.0	kg	63.0	2	3
		inch	18.31	48.46	42.68	33.46	0.63	0.79	0.63	1.50	lbs	138.9		
25-49.5	20 64 093	mm	465	1289	1179	890	16.0	20.0	16.0	35.0	kg	63.0	4	3
		inch	18.31	50.76	46.42	35.04	0.63	0.79	0.63	1.38	lbs	138.9		
25-55.5	20 64 094	mm	465	1442	1314	900	16.0	20.0	16.0	38.0	kg	56.5	2	3
		inch	18.31	56.76	51.73	35.43	0.63	0.79	0.63	1.50	lbs	124.4		
24.5-25.1 DK 3737	20 14 148	mm	470	696	600	660	7.9	12.7	12.7	28.6	kg	13.3	4	15
		inch	18.50	27.39	23.63	26.00	0.31	0.50	0.50	1.13	lbs	29.3		
24-25-29.2 DK 3266	20 14 146	mm	470	800	689	711	9.5	12.7	12.7	28.6	kg	17.9	4	12
		inch	18.50	31.49	27.13	28.00	0.38	0.50	0.50	1.13	lbs	39.5		
24-23.0 DK 6700	20 14 158	mm	483	632	565	603	9.5	12.7	12.7	28.6	kg	15.9	2	12
		inch	19.00	24.88	22.25	23.75	0.38	0.50	0.50	1.13	lbs	35.1		
24-30.7	20 64 089	mm	484	808	710	690	11.5	12.7	12.7	27.6	kg	20.1	2	4
		inch	19.06	31.82	27.95	27.17	0.45	0.50	0.50	1.09	lbs	44.3		
24-33.5	20 64 090	mm	485	880	780	690	11.5	12.7	12.7	27.6	kg	22.9	2	4
		inch	19.08	34.63	30.71	27.17	0.45	0.50	0.50	1.09	lbs	50.5		
8-24	20 07 031	mm	488	480	397	656	12.0	10.0	12.0	26.0	kg	12.4	5	10
		inch	19.21	18.90	15.63	25.83	0.47	0.39	0.47	1.02	lbs	27.3		
9-24	20 07 032	mm	488	550	467	656	12.0	10.0	12.0	26.0	kg	14.6	5	10
		inch	19.21	21.65	18.39	25.83	0.47	0.39	0.47	1.02	lbs	32.2		

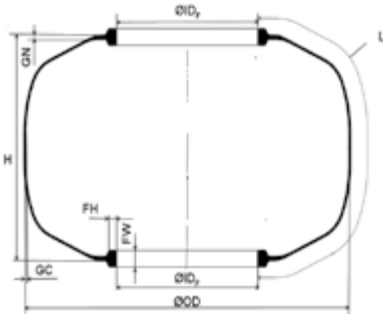
BOM Type Bladders Application in Bagomatic Presses



Bladder Description	Article Number		(ID) _f Foot ID	(L) Length	(H) Height	(OD) Outside Dia- meter	(GC) Crown Gauge	(GN) Neck Gauge	(FH) Foot Height	(FW) Foot Width		Trimmed Weight	Surface Design	Packing Unit
OTR Tires Bias														
10-24	20 07 035	mm	488	607	507	700	12.0	10.0	12.0	26.0	kg	15.9	5	10
		inch	19.21	23.90	19.96	27.56	0.47	0.39	0.47	1.02	lbs	35.1		
18.4-26	20 07 050	mm	536	966	867	800	13.0	13.0	13.2	25.5	kg	31.5	4	10
		inch	21.10	38.03	34.13	31.50	0.51	0.51	0.52	1.00	lbs	69.4		
29-57.0	20 64 095	mm	546	1479	1306	813	19.1	15.8	15.9	30.8	kg	60.0	4	2
		inch	21.50	58.22	51.41	32.00	0.75	0.62	0.63	1.21	lbs	132.3		
33-51.0	20 64 100	mm	572	1346	1116	914	15.9	23.4	25.4	50.8	kg	61.0	2	2
		inch	22.50	53.00	43.92	36.00	0.63	0.92	1.00	2.00	lbs	134.5		
28-22.8 DK 6739	20 14 159	mm	584	627	549	686	9.5	12.7	12.7	28.6	kg	17.9	4	12
		inch	23.00	24.68	21.63	27.00	0.38	0.50	0.50	1.13	lbs	39.4		
28-35.4	20 64 544	mm	584	927	870	711	9.5	12.7	12.7	28.6	kg	28.5	4	4
		inch	23.00	36.51	34.25	27.99	0.37	0.50	0.50	1.13	lbs	62.8		
11-28	20 07 042	mm	589	709	628	801	15.7	11.7	12.0	26.0	kg	25.0	1	10
		inch	23.19	27.91	24.72	31.54	0.62	0.46	0.47	1.02	lbs	55.1		
41	20 16 118	mm	589	774	670	820	18.0	18.0	15.0	40.0	kg	37.4	10	5
		inch	23.19	30.47	26.38	32.28	0.71	0.71	0.59	1.57	lbs	82.5		
13-28	20 07 043	mm	589	809	728	801	15.7	11.7	12.0	26.0	kg	30.1	1	10
		inch	23.19	31.85	28.66	31.54	0.62	0.46	0.47	1.02	lbs	66.4		
41 A	20 16 028	mm	589	880	776	820	18.0	18.0	15.0	40.0	kg	41.6	10	5
		inch	23.19	34.65	30.55	32.28	0.71	0.71	0.59	1.57	lbs	91.7		
14-28	20 07 058	mm	589	904	821	820	15.0	10.5	12.0	26.0	kg	33.0	4	10
		inch	23.19	35.59	32.32	32.28	0.59	0.41	0.47	1.02	lbs	72.8		
14-30	20 07 059	mm	589	954	871	820	15.0	10.0	12.0	26.0	kg	34.8	4	10
		inch	23.19	37.56	34.29	32.28	0.59	0.39	0.47	1.02	lbs	76.7		
33-47.5	20 13 051	mm	665	1239	1114	980	16.0	16.0	16.0	32.0	kg	56.5	4	2
		inch	26.18	48.76	43.86	38.58	0.63	0.63	0.63	1.26	lbs	124.6		
9-32	20 07 051	mm	691	560	430	813	16.2	11.1	12.0	26.0	kg	21.5	4	10
		inch	27.20	22.05	16.93	32.01	0.64	0.44	0.47	1.02	lbs	47.4		
11-32	20 07 052	mm	691	680	613	813	16.2	11.1	12.0	26.0	kg	27.2	4	10
		inch	27.20	26.77	24.13	32.01	0.64	0.44	0.47	1.02	lbs	60.0		
34	20 16 060	mm	693	500	420	850	12.0	12.0	14.0	30.0	kg	18.6	6	5
		inch	27.28	19.69	16.54	33.46	0.47	0.47	0.55	1.18	lbs	41.0		
33 A	20 16 018	mm	693	822	751	860	16.0	16.0	14.0	30.0	kg	35.0	10	5
		inch	27.28	32.36	29.57	33.86	0.63	0.63	0.55	1.18	lbs	77.2		
14-34	20 07 061	mm	728	910	796	1020	15.0	11.0	13.0	27.0	kg	40.0	4	10
		inch	28.66	35.83	31.34	40.16	0.59	0.43	0.51	1.06	lbs	88.2		
15-34	20 07 062	mm	728	990	876	1020	15.0	11.0	13.0	27.0	kg	47.6	4	8
		inch	28.66	38.98	34.49	40.16	0.59	0.43	0.51	1.06	lbs	104.9		

Bladder Description	Article Number		(ID _p) Foot ID	(L) Length	(H) Height	(OD) Outside Dia- meter	(GC) Crown Gauge	(GN) Neck Gauge	(FH) Foot Height	(FW) Foot Width		Trimmed Weight	Surface Design	Packing Unit
OTR Tires Bias														
39	20 16 054	mm	746	526	392	960	18.0	18.0	18.0	36.0	kg	31.2	10	5
		inch	29.37	20.71	15.43	37.80	0.71	0.71	0.71	1.42	lbs	68.8		
39 A	20 16 026	mm	746	566	432	960	18.0	18.0	18.0	36.0	kg	33.6	10	5
		inch	29.37	22.28	17.01	37.80	0.71	0.71	0.71	1.42	lbs	74.1		
39 B	20 16 053	mm	746	686	552	960	18.0	18.0	18.0	36.0	kg	39.3	10	5
		inch	29.37	27.01	21.73	37.80	0.71	0.71	0.71	1.42	lbs	86.6		
11-36	20 07 053	mm	780	656	553	1006	15.5	11.0	12.0	23.0	kg	30.7	4	10
		inch	30.71	25.83	21.77	39.61	0.61	0.43	0.47	0.91	lbs	67.7		
12-36	20 07 054	mm	780	716	613	1006	15.5	11.0	12.0	23.0	kg	33.0	4	10
		inch	30.71	28.19	24.13	39.61	0.61	0.43	0.47	0.91	lbs	72.8		
36-21.0 DK 6769	20 14 335	mm	787	581	505	889	9.5	12.7	12.7	28.6	kg	20.1	4	10
		inch	31.00	22.88	19.88	35.00	0.38	0.50	0.50	1.13	lbs	44.3		
11-38	20 07 074	mm	827	674	594	1000	12.0	10.0	12.0	26.0	kg	29.3	10	10
		inch	32.56	26.54	23.39	39.37	0.47	0.39	0.47	1.02	lbs	64.6		
12-38	20 07 060	mm	827	778	682	1046	13.5	10.0	12.0	26.0	kg	35.0	4	10
		inch	32.56	30.63	26.85	41.18	0.53	0.39	0.47	1.02	lbs	77.2		
14-38	20 07 063	mm	827	880	784	1046	13.5	10.0	12.0	26.0	kg	41.0	4	10
		inch	32.56	34.65	30.87	41.18	0.53	0.39	0.47	1.02	lbs	90.4		
18.4-38	20 07 055	mm	827	978	844	1150	13.0	10.0	12.0	26.0	kg	46.1	4	6
		inch	32.56	38.50	33.23	45.28	0.51	0.39	0.47	1.02	lbs	101.6		
20.8-38	20 16 307	mm	827	1088	954	1150	13.0	10.0	12.0	26.0	kg	53.4	4	6
		inch	32.56	42.83	37.56	45.28	0.51	0.39	0.47	1.02	lbs	117.7		
38-22.2 DK 6774	20 14 100	mm	838	605	537	927	9.5	12.7	12.7	28.6	kg	22.6	4	10
		inch	33.00	23.83	21.13	36.50	0.38	0.50	0.50	1.13	lbs	49.8		
49-63.0	20 64 101	mm	953	1651	1368	1524	15.9	22.2	15.2	38.1	kg	120.0	4	1
		inch	37.50	65.00	53.88	60.00	0.63	0.88	0.60	1.50	lbs	264.6		
51-71.0	20 64 114	mm	953	1860	1573	1524	19.1	23.4	25.4	50.8	kg	160.0	4	1
		inch	37.50	73.21	61.92	60.00	0.75	0.92	1.00	2.00	lbs	352.7		

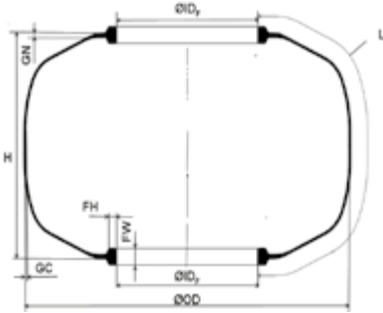
BOM Type Bladders Application in Bagomatic Presses



Bladder Description	Article Number		(ID) _f Foot ID	(L) Length	(H) Height	(OD) Outside Dia- meter	(GC) Crown Gauge	(GN) Neck Gauge	(FH) Foot Height	(FW) Foot Width		Trimmed Weight	Surface Design	Packing Unit
Kart / Wheelbarrow / Industrial / Farm Implement Tires														
BOM 411	20 17 833	mm inch	51 2.01	129 5.08	95 3.74	100 3.94	4.0 0.16	4.0 0.16	6.0 0.24	8.5 0.33	kg lbs	0.2 0.5	3	50
BOM 414	20 17 801	mm inch	51 2.01	168 6.61	135 5.31	100 3.94	5.0 0.20	5.0 0.20	6.0 0.24	8.5 0.33	kg lbs	0.3 0.7	3	50
BOM 401	20 17 809	mm inch	51 2.01	210 8.27	170 6.69	130 5.12	5.9 0.23	5.9 0.23	7.0 0.28	14.0 0.55	kg lbs	0.4 0.9	3	50
BOM 406	20 17 862	mm inch	51 2.01	261 10.28	208 8.19	145 5.71	6.0 0.24	6.0 0.24	8.0 0.31	14.0 0.55	kg lbs	0.6 1.3	6	not defined
BOM 403	20 17 810	mm inch	51 2.01	270 10.63	230 9.06	130 5.12	5.9 0.23	5.9 0.23	7.0 0.28	14.0 0.55	kg lbs	0.6 1.2	3	50
BOM 407 V1	20 17 865	mm inch	51 2.01	347 13.64	297 11.69	150 5.91	6.0 0.24	6.0 0.24	8.0 0.31	14.0 0.55	kg lbs	0.9 1.9	6	50
BOM 404-220	20 17 811	mm inch	60 2.36	270 10.63	224 8.82	130 5.12	5.0 0.20	5.0 0.20	7.0 0.28	14.0 0.55	kg lbs	0.5 1.2	4	50
BOM 603	20 17 802	mm inch	95 3.74	273 10.75	218 8.58	180 7.09	6.0 0.24	6.0 0.24	9.0 0.35	17.0 0.67	kg lbs	1.1 2.4	3	not defined
BOM 803	20 17 806	mm inch	152 5.98	277 10.91	238 9.37	220 8.66	6.0 0.24	6.0 0.24	9.0 0.35	16.0 0.63	kg lbs	1.2 2.6	3	50
BOM 805	20 17 825	mm inch	152 5.98	342 13.46	302 11.89	240 9.45	6.0 0.24	6.0 0.24	9.0 0.35	17.0 0.67	kg lbs	1.5 3.4	3	50
BOM 1005	20 17 054	mm inch	152 5.98	365 14.37	290 11.42	280 11.02	8.0 0.31	8.0 0.31	11.0 0.43	22.0 0.87	kg lbs	2.5 5.4	4	30
BOM 1003	20 17 818	mm inch	158 6.22	325 12.80	255 10.04	260 10.24	7.6 0.30	7.6 0.30	11.0 0.43	21.0 0.83	kg lbs	2.0 4.4	4	30
BOM 1004	20 17 539	mm inch	158 6.22	374 14.72	305 12.01	260 10.24	5.0 0.20	7.0 0.28	11.0 0.43	21.0 0.83	kg lbs	1.6 3.6	4	30
BOM 1200	20 17 543	mm inch	207 8.15	258 10.16	200 7.87	285 11.22	8.0 0.31	8.0 0.31	11.0 0.43	23.0 0.91	kg lbs	1.8 4.0	4	60
BOM 1201	20 17 541	mm inch	207 8.15	325 12.80	226 8.88	309 12.17	7.3 0.29	7.0 0.28	11.0 0.43	23.0 0.91	kg lbs	2.5 5.4	4	30
BOM 1203 D	20 17 542	mm inch	207 8.15	386 15.20	313 12.32	311 12.24	5.0 0.20	6.3 0.25	11.0 0.43	23.0 0.91	kg lbs	2.7 6.0	3	36
BOM 1301	20 17 819	mm inch	225 8.86	386 15.20	305 12.01	351 13.82	7.0 0.28	7.0 0.28	11.0 0.43	23.0 0.91	kg lbs	3.1 6.9	4	30
BOM 1302 D	20 17 507	mm inch	225 8.86	412 16.22	323 12.72	351 13.82	4.5 0.18	8.0 0.31	11.0 0.43	23.0 0.91	kg lbs	2.7 6.0	4	30
BOM 1310	20 17 512	mm inch	225 8.86	510 20.08	440 17.32	351 13.82	7.0 0.28	8.0 0.31	11.0 0.43	23.0 0.91	kg lbs	4.5 10.0	4	15

Bladder Description	Article Number		(ID _F) Foot ID	(L) Length	(H) Height	(OD) Outside Dia- meter	(GC) Crown Gauge	(GN) Neck Gauge	(FH) Foot Height	(FW) Foot Width		Trimmed Weight	Surface Design	Packing Unit
Kart / Wheelbarrow / Industrial / Farm Implement Tires														
BOM 1502	20 17 514	mm	276	368	279	402	7.0	8.0	11.0	23.0	kg	3.5	4	32
		inch	10.87	14.49	10.98	15.83	0.28	0.31	0.43	0.91	lbs	7.7		
BOM 1504	20 17 116	mm	276	430	359	390	6.4	8.0	11.0	23.0	kg	3.8	4	10
		inch	10.87	16.93	14.13	15.35	0.25	0.31	0.43	0.91	lbs	8.3		
BOM 1507	20 17 517	mm	276	448	357	402	7.0	8.0	11.0	23.0	kg	4.1	4	21
		inch	10.87	17.64	14.06	15.83	0.28	0.31	0.43	0.91	lbs	9.0		
BOM 1511	20 17 525	mm	276	480	393	402	7.0	8.0	12.5	23.5	kg	4.4	4	14
		inch	10.87	18.90	15.47	15.83	0.28	0.31	0.49	0.93	lbs	9.7		
BOM 1510	20 17 524	mm	276	486	415	402	7.0	8.0	11.0	23.0	kg	4.6	4	10
		inch	10.87	19.13	16.34	15.83	0.28	0.31	0.43	0.91	lbs	10.0		
BOM 1513	20 17 513	mm	276	492	417	422	7.0	8.0	11.0	23.0	kg	4.6	4	12
		inch	10.87	19.37	16.42	16.61	0.28	0.31	0.43	0.91	lbs	10.2		
BOM 1514	20 17 526	mm	276	515	426	437	8.0	8.0	11.0	23.0	kg	6.2	4	14
		inch	10.87	20.28	16.77	17.20	0.31	0.31	0.43	0.91	lbs	13.7		
BOM 1515	20 17 527	mm	276	542	454	437	8.0	8.0	11.0	23.0	kg	5.8	4	10
		inch	10.87	21.34	17.87	17.20	0.31	0.31	0.43	0.91	lbs	12.8		
BOM 1517	20 17 358	mm	276	620	530	437	8.0	8.0	11.0	23.0	kg	6.7	4	10
		inch	10.87	24.41	20.87	17.20	0.31	0.31	0.43	0.91	lbs	14.7		
6.00-16	20 07 013	mm	314	423	356	461	10.5	9.0	9.0	18.0	kg	5.4	4	10
		inch	12.36	16.65	14.02	18.15	0.41	0.35	0.35	0.71	lbs	11.8		
6.00-18	20 07 044	mm	314	485	418	461	10.5	9.0	9.0	18.0	kg	6.4	4	10
		inch	12.36	19.09	16.46	18.15	0.41	0.35	0.35	0.71	lbs	14.0		
BOM 1804	20 17 040	mm	318	635	524	530	8.0	8.0	12.5	25.0	kg	8.1	3	10
		inch	12.52	25.00	20.63	20.87	0.31	0.31	0.49	0.98	lbs	17.9		
BOM 1703	20 17 529	mm	325	432	354	460	6.2	8.0	11.0	23.0	kg	4.8	4	21
		inch	12.80	17.01	13.94	18.11	0.24	0.31	0.43	0.91	lbs	10.5		
6.50-20	20 07 014	mm	418	470	399	580	11.5	9.0	9.0	20.0	kg	9.0	4	10
		inch	16.46	18.50	15.71	22.83	0.45	0.35	0.35	0.79	lbs	19.8		
7.50-20	20 07 046	mm	418	520	449	580	11.5	9.0	9.0	20.0	kg	9.2	4	10
		inch	16.46	20.47	17.68	22.83	0.45	0.35	0.35	0.79	lbs	20.3		

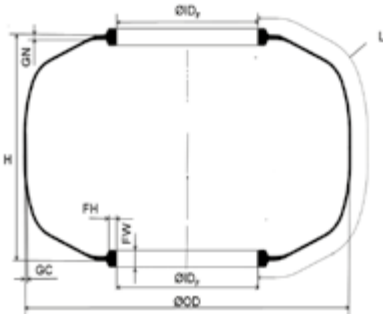
BOM Type Bladders Application in Bagomatic Presses



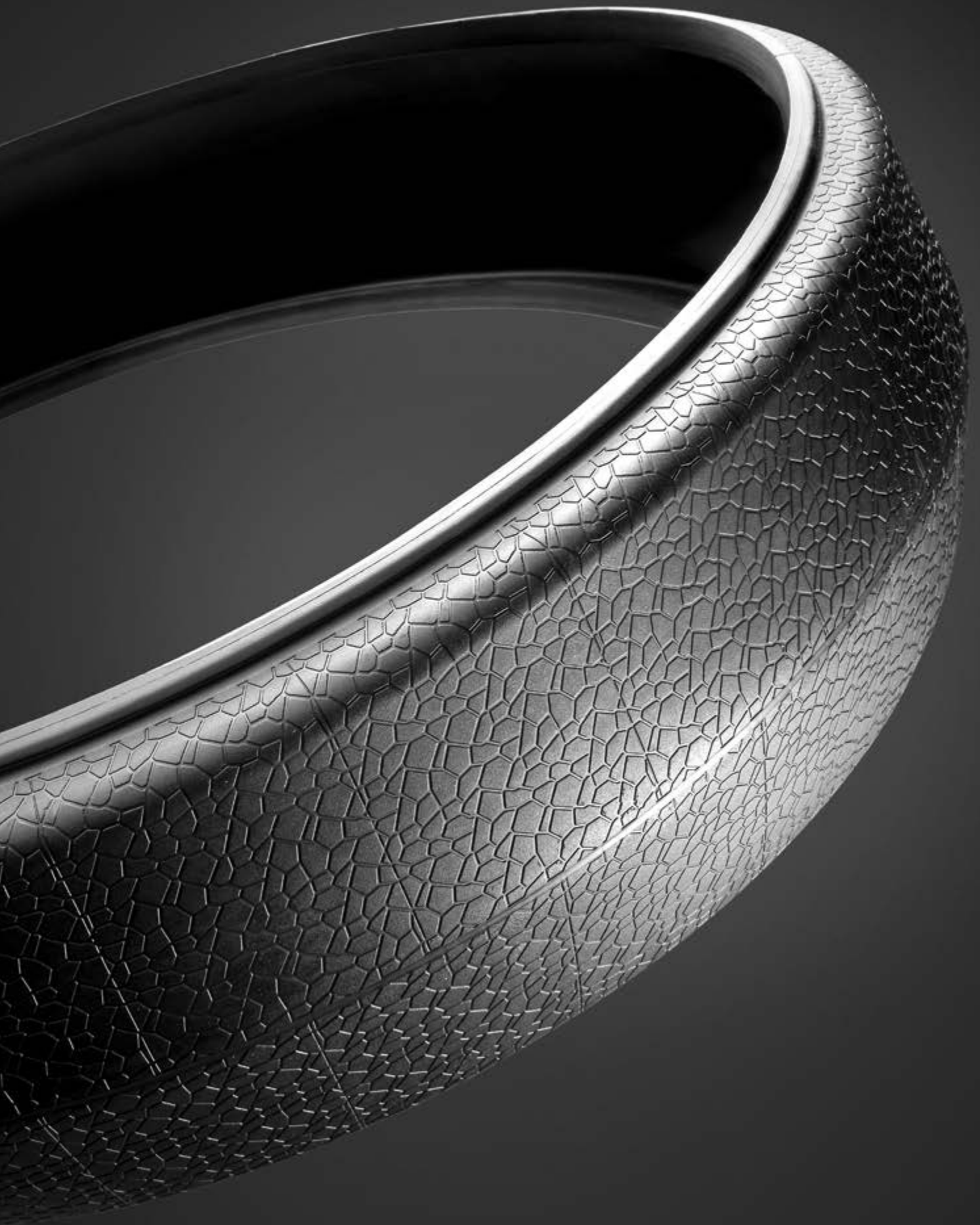
Bladder Description	Article Number		(ID) _F Foot ID	(L) Length	(H) Height	(OD) Outside Dia- meter	(GC) Crown Gauge	(GN) Neck Gauge	(FH) Foot Height	(FW) Foot Width		Trimmed Weight	Surface Design	Packing Unit
Motorcycle Tires														
B 0 NP	20 13 062	mm	225	388	200	510	4.5	7.0	12.0	24.0	kg	3.0	1	60
		inch	8.86	15.28	7.87	20.08	0.18	0.28	0.47	0.94	lbs	6.6		
BOM 1605	20 17 537	mm	341	227	185	417	5.0	5.0	8.0	14.5	kg	1.9	3	50
		inch	13.43	8.94	7.26	16.42	0.20	0.20	0.31	0.57	lbs	4.2		
BOM 1600	20 17 506	mm	345	166	118	416	4.5	5.5	8.0	14.0	kg	1.1	3	50
		inch	13.58	6.54	4.63	16.38	0.18	0.22	0.31	0.55	lbs	2.3		
17-7.2	20 64 083	mm	367	197	162	430	4.0	7.5	7.0	20.0	kg	1.8	3	120
		inch	14.45	7.75	6.36	16.93	0.16	0.30	0.28	0.79	lbs	3.9		
BOM 1700	20 17 848	mm	369	165	118	440	4.5	5.5	8.0	14.0	kg	1.8	3	50
		inch	14.53	6.50	4.63	17.32	0.18	0.22	0.31	0.55	lbs	3.9		
BOM 1704 E	20 17 538	mm	369	212	168	448	4.2	5.5	8.0	14.5	kg	1.6	3	50
		inch	14.53	8.35	6.61	17.64	0.17	0.22	0.31	0.57	lbs	3.5		
BOM 1704	20 17 849	mm	369	215	168	453	3.6	5.5	8.0	15.0	kg	1.8	10	30
		inch	14.53	8.46	6.61	17.83	0.14	0.22	0.31	0.59	lbs	3.9		
BOM 1805 E	20 17 805	mm	388	246	190	478	5.0	5.0	8.0	14.5	kg	2.2	3	50
		inch	15.28	9.69	7.48	18.82	0.20	0.20	0.31	0.57	lbs	4.9		
BOM 1810 E	20 17 826	mm	388	288	232	481	6.0	6.0	8.0	16.5	kg	2.9	3	12
		inch	15.28	11.34	9.13	18.94	0.24	0.24	0.31	0.65	lbs	6.5		
18-7.7	20 64 084	mm	392	210	173	455	6.0	7.5	7.0	20.0	kg	2.1	3	90
		inch	15.43	8.25	6.79	17.91	0.24	0.30	0.28	0.79	lbs	4.6		
18-8.3	20 64 085	mm	392	225	188	455	6.0	7.5	7.0	20.0	kg	2.3	3	90
		inch	15.43	8.85	7.38	17.91	0.24	0.30	0.28	0.79	lbs	5.1		
BOM 1900	20 17 850	mm	410	166	118	481	4.5	5.5	8.0	14.0	kg	1.6	3	50
		inch	16.14	6.54	4.63	18.94	0.18	0.22	0.31	0.55	lbs	3.5		
BOM 1902	20 17 851	mm	421	188	139	498	4.5	5.5	8.0	13.5	kg	1.6	3	50
		inch	16.57	7.40	5.45	19.61	0.18	0.22	0.31	0.53	lbs	3.6		
BOM 2203 SE	20 17 867	mm	498	162	118	569	4.5	5.5	8.0	14.0	kg	1.8	2	50
		inch	19.61	6.38	4.63	22.40	0.18	0.22	0.31	0.55	lbs	3.9		



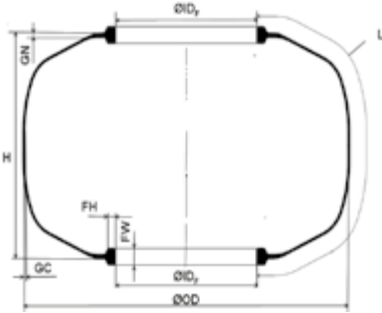
BOM Type Bladders Application in Bagomatic Presses



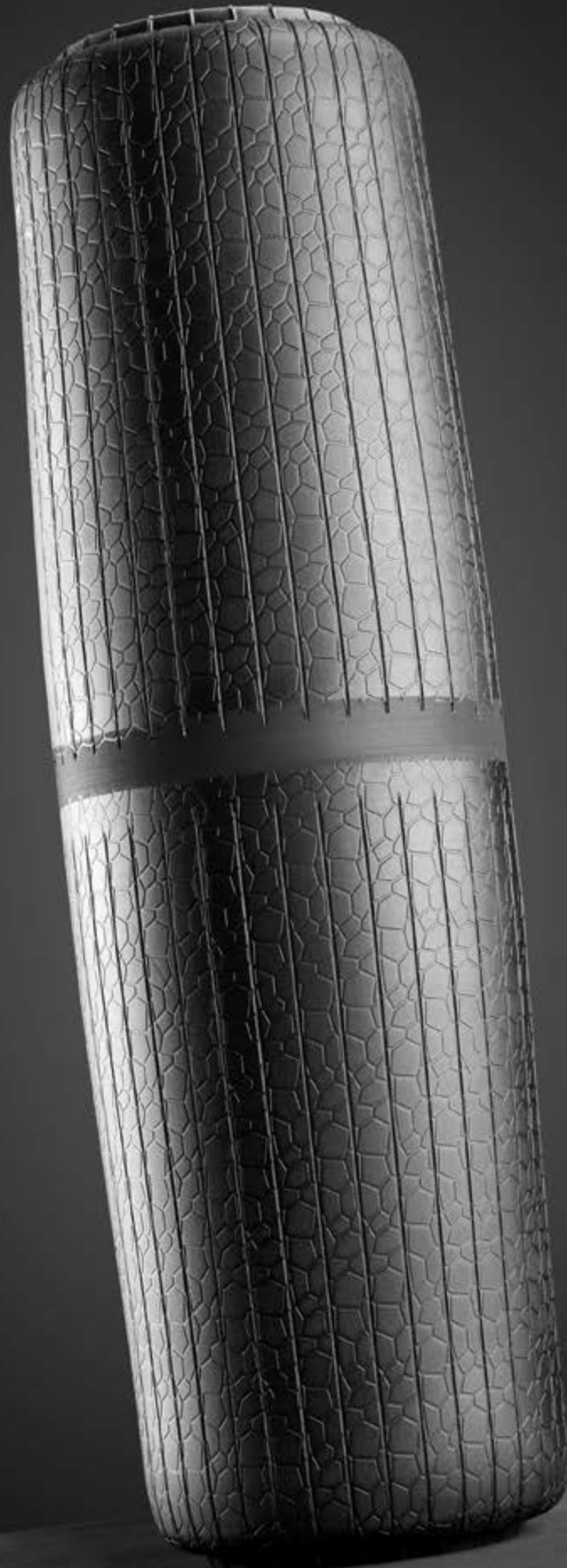
Bladder Description	Article Number		(ID _F) Foot ID	(L) Length	(H) Height	(OD) Outside Dia- meter	(GC) Crown Gauge	(GN) Neck Gauge	(FH) Foot Height	(FW) Foot Width		Trimmed Weight	Surface Design	Packing Unit
Bicycle Tires														
BOM Z 203-08	20 17 836	mm	149	165	118	219	3.5	5.5	8.0	14.0	kg	0.6	3	100
		inch	5.87	6.50	4.63	8.62	0.14	0.22	0.31	0.55	lbs	1.2		
BOM Z 305-05	20 17 837	mm	260	120	90	307	3.5	5.0	8.5	13.0	kg	0.6	3	50
		inch	10.24	4.72	3.54	12.09	0.14	0.20	0.33	0.51	lbs	1.4		
BOM Z 355-05	20 17 838	mm	310	120	90	357	3.5	5.0	8.5	13.0	kg	0.6	3	50
		inch	12.20	4.72	3.54	14.06	0.14	0.20	0.33	0.51	lbs	1.4		
BOM Z 406-06	20 17 820	mm	345	150	98	421	3.5	5.5	8.0	15.0/15.8	kg	1.3	3	25
		inch	13.58	5.91	3.86	16.57	0.14	0.22	0.31	0.59/0.62	lbs	2.8		
BOM Z 406-06 NP	20 13 310	mm	345	152	106	421	3.5	5.5	8.0	15.0	kg	1.0	1.1	not defined
		inch	13.58	5.98	4.15	16.57	0.14	0.22	0.31	0.59	lbs	2.2		
BOM Z 406-07	20 13 309	mm	345	202	156	421	3.5	5.5	8.0	15.0	kg	1.3	1.1	not defined
		inch	13.58	7.95	6.12	16.57	0.14	0.22	0.31	0.59	lbs	2.9		
BOM Z 507-05	20 17 840	mm	445	142	90	520	3.5	5.5	8.0	14.0	kg	1.5	3	50
		inch	17.52	5.59	3.52	20.47	0.14	0.22	0.31	0.55	lbs	3.3		
BOM Z 540-03	20 17 839	mm	478	120	71	546	3.5	5.0	8.0	14.0	kg	0.9	3	50
		inch	18.82	4.72	2.80	21.50	0.14	0.20	0.31	0.55	lbs	1.9		
BOM Z 559-05	20 17 821	mm	490	142	89	561	3.5	5.5	8.5	14.5	kg	1.6	3	50
		inch	19.29	5.59	3.50	22.09	0.14	0.22	0.33	0.57	lbs	3.6		
BOM Z 584-02	20 13 224	mm	520	101	60	570	4.5	5.5	8.0	14.0	kg	1.1	2	50
		inch	20.47	3.99	2.36	22.44	0.18	0.22	0.31	0.55	lbs	2.4		
BOM Z 584	20 13 124	mm	520	164	118	594	4.5	5.5	8.0	14.0	kg	1.9	2	50
		inch	20.47	6.46	4.65	23.39	0.18	0.22	0.31	0.55	lbs	4.1		
BOM Z 584-04	20 13 227	mm	520	172	118	610	4.5	5.5	8.0	14.0	kg	1.9	1	50
		inch	20.47	6.77	4.65	24.02	0.18	0.22	0.31	0.55	lbs	4.1		
BOM Z 584-03	20 13 219	mm	520	183	133	596	4.5	5.5	8.0	14.0	kg	1.9	2	50
		inch	20.47	7.20	5.24	23.46	0.18	0.22	0.31	0.55	lbs	4.1		
BOM Z 590-03	20 17 841	mm	530	120	71	598	3.5	4.0	8.0	14/14.8	kg	1.4	3	50
		inch	20.87	4.72	2.80	23.54	0.14	0.16	0.31	0.6/0.6	lbs	3.0		
BOM Z 622-04	20 17 822	mm	555	134	84	625	3.5	5.5	8.5	14.5	kg	1.7	5	50
		inch	21.85	5.28	3.31	24.61	0.14	0.22	0.33	0.57	lbs	3.7		
BOM Z 622-06	20 13 126	mm	555	155	110	632	3.5	5.5	8.0	14.5	kg	1.7	1	50
		inch	21.85	6.10	4.33	24.88	0.14	0.22	0.31	0.57	lbs	3.6		
BOM Z 622-02	20 17 842	mm	565	98	50	620	3.5	5.0	7.5	14.5	kg	1.3	1	50
		inch	22.24	3.86	1.97	24.41	0.14	0.20	0.30	0.57	lbs	2.9		
BOM Z 622-01	20 17 803	mm	565	110	78	600	2.0	5.0	7.0	14.0	kg	1.1	2	50
		inch	22.24	4.33	3.07	23.62	0.08	0.20	0.28	0.55	lbs	2.4		
BOM Z 630-02 NP	20 13 289	mm	565	111	64	627	3.5	5.5	7.0	14.0	kg	1.2	1.1	50
		inch	22.24	4.37	2.50	24.69	0.14	0.22	0.28	0.55	lbs	2.7		
BOM Z 635-04	20 17 843	mm	575	133	89	643	5.5	5.5	8.0	13.0	kg	1.7	3	50
		inch	22.64	5.24	3.48	25.31	0.22	0.22	0.31	0.51	lbs	3.7		
BOM Z 571-03	20 13 140	mm	575	146	99	648	5.5	5.5	8.0	13.0	kg	1.2	10	50
		inch	22.64	5.75	3.88	25.51	0.22	0.22	0.31	0.51	lbs	2.7		



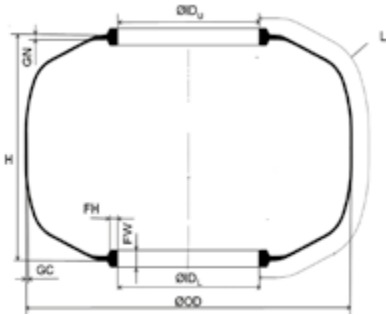
BOM Type Bladders Application in Bagomatic Presses



Bladder Description	Article Number		(ID) _f Foot ID	(L) Length	(H) Height	(OD) Outside Dia- meter	(GC) Crown Gauge	(GN) Neck Gauge	(FH) Foot Height	(FW) Foot Width		Trimmed Weight	Surface Design	Packing Unit
Air Springs														
BOM 404-220	20 17 811	mm	60	270	220	130	5.0	5.0	7.0	14.0	kg	0.5	4	50
		inch	2.36	10.63	8.66	5.12	0.20	0.20	0.28	0.55	lbs	1.2		
BOM 404-330	20 17 855	mm	60	372	324	130	5.0	5.0	7.0	14.0	kg	0.8	4	50
		inch	2.36	14.65	12.76	5.12	0.20	0.20	0.28	0.55	lbs	1.8		
BOM 505-310	20 17 812	mm	78	362	310	161	6.3	6.3	8.0	19.0	kg	1.1	4	100
		inch	3.07	14.25	12.20	6.32	0.25	0.25	0.31	0.75	lbs	2.4		
BOM 506-360	20 17 815	mm	78	394	360	140	6.5	6.5	8.0	19.0	kg	1.1	4	100
		inch	3.07	15.51	14.17	5.51	0.26	0.26	0.31	0.75	lbs	2.4		
BOM 505-360	20 17 813	mm	78	412	360	161	6.3	6.3	8.0	19.0	kg	1.2	4	90
		inch	3.07	16.22	14.17	6.32	0.25	0.25	0.31	0.75	lbs	2.7		
BOM 506-410	20 17 816	mm	78	444	410	140	6.5	6.5	8.0	19.0	kg	1.2	4	90
		inch	3.07	17.48	16.14	5.51	0.26	0.26	0.31	0.75	lbs	2.7		
BOM 505-410	20 17 814	mm	78	462	410	161	6.3	6.3	8.0	19.0	kg	1.5	4	75
		inch	3.07	18.19	16.14	6.32	0.25	0.25	0.31	0.75	lbs	3.2		
BOM 506-450	20 13 214	mm	78	487	450	140	6.3	6.3	8.0	19.0	kg	1.5	4	50
		inch	3.07	19.15	17.72	5.51	0.25	0.25	0.31	0.75	lbs	3.3		
BOM 507	20 17 059	mm	78	514	440	200	6.0	6.8	8.0	19.0	kg	1.7	4	50
		inch	3.07	20.24	17.32	7.87	0.24	0.27	0.31	0.75	lbs	3.7		
BOM 508	20 17 063	mm	78	562	500	170	6.0	6.8	8.0	19.0	kg	1.8	4	50
		inch	3.07	22.13	19.69	6.69	0.24	0.27	0.31	0.75	lbs	3.9		
BOM 506-580	20 13 215	mm	78	616	580	140	6.3	6.3	8.0	19.0	kg	2.1	4	40
		inch	3.07	24.26	22.83	5.51	0.25	0.25	0.31	0.75	lbs	4.6		
BOM 512	20 17 817	mm	120	404	360	200	6.7	6.7	8.0	19.0	kg	1.8	4	50
		inch	4.72	15.91	14.19	7.89	0.26	0.26	0.31	0.75	lbs	3.9		
BOM 510-370	20 17 058	mm	120	460	370	260	6.0	6.8	8.0	19.0	kg	2.1	4	30
		inch	4.72	18.11	14.57	10.24	0.24	0.27	0.31	0.75	lbs	4.7		
BOM 510-450	20 13 063	mm	120	485	450	260	6.0	6.8	8.0	19.0	kg	2.6	4	40
		inch	4.72	19.09	17.72	10.24	0.24	0.27	0.31	0.75	lbs	5.7		
BOM 510-510	20 17 055	mm	120	600	510	260	6.0	6.8	8.0	19.0	kg	3.0	4	36
		inch	4.72	23.62	20.08	10.24	0.24	0.27	0.31	0.75	lbs	6.6		
BOM 514	20 17 501	mm	120	652	600	197	6.0	6.8	8.0	19.0	kg	2.5	4	40
		inch	4.72	25.67	23.62	7.76	0.24	0.27	0.31	0.75	lbs	5.5		
F 68	20 17 060	mm	380	602	322	560	6.5	6.5	11.0	23.0	kg	6.1	4	12
		inch	14.96	23.70	12.68	22.05	0.26	0.26	0.43	0.91	lbs	13.4		



Bladders for Retreading



Bladder Description	Article Number		(ID _U) Upper Foot ID	(ID _L) Lower Foot ID	(L) Length	(H) Height	(OD) Outside Dia- meter	(GC) Crown Gauge	(GN) Neck Gauge	(FH) Foot Height	(FW) Foot Width		Trimmed Weight	Surface Design	Packing Unit
Retreading															
H 10	20 17 003	mm	160	160	465	405	250	8.0	8.0	10.0	21.0	kg	3.0	3	27
		inch	6.30	6.30	18.31	15.94	9.84	0.31	0.31	0.39	0.83	lbs	6.6		
BOM 1203 D	20 17 542	mm	207	207	386	313	311	5.0	6.3	11.0	23.0	kg	2.7	3	36
		inch	8.15	8.15	15.20	12.32	12.24	0.20	0.25	0.43	0.91	lbs	6.0		
RP 13-3 V	20 17 008	mm	225	225	430	312	413	8.0	8.0	11.0	21.0	kg	4.4	3	16
		inch	8.86	8.86	16.93	12.28	16.26	0.31	0.31	0.43	0.83	lbs	9.6		
RP 13-4	20 17 007	mm	225	225	450	335	413	8.0	8.0	11.0	23.0	kg	4.4	4	20
		inch	8.86	8.86	17.72	13.19	16.26	0.31	0.31	0.43	0.91	lbs	9.7		
RP 13-5	20 17 010	mm	225	225	480	335	450	6.0	8.0	12.5	23.5	kg	4.2	4	50
		inch	8.86	8.86	18.90	13.19	17.72	0.24	0.31	0.49	0.93	lbs	9.2		
BN 1	20 17 306	mm	225	200	495	416	351	7.0	8.0	13.0	19.0	kg	4.0	4	20
		inch	8.86	7.87	19.49	16.38	13.82	0.28	0.31	0.51	0.75	lbs	8.8		
RP 13-7	20 17 013	mm	225	225	536	395	460	6.0	8.0	12.5	23.5	kg	4.6	4	40
		inch	8.86	8.86	21.10	15.55	18.11	0.24	0.31	0.49	0.93	lbs	10.2		
RP 13-9	20 17 011	mm	225	225	607	490	467	7.2	7.2	12.5	23.5	kg	6.4	4	30
		inch	8.86	8.86	23.90	19.29	18.39	0.28	0.28	0.49	0.93	lbs	14.2		
BN 2	20 17 307	mm	250	225	680	508	400	7.0	8.0	13.0	19.0	kg	5.7	4	16
		inch	9.84	8.86	26.77	20.00	15.75	0.28	0.31	0.51	0.75	lbs	12.5		
BN 4	20 17 312	mm	373	277	930	832	537	11.0	11.0	15.5	30.0	kg	16.4	4	12
		inch	14.69	10.91	36.61	32.76	21.14	0.43	0.43	0.61	1.18	lbs	36.2		
RP 20-3	20 17 518	mm	355	355	632	500	630	8.0	10.0	15.0	27.0	kg	9.9	3	14
		inch	13.98	13.98	24.88	19.69	24.80	0.31	0.39	0.59	1.06	lbs	21.8		
RP 20-5	20 17 521	mm	355	355	750	603	673	8.0	10.0	15.0	27.0	kg	12.0	3	12
		inch	13.98	13.98	29.53	23.74	26.50	0.31	0.39	0.59	1.06	lbs	26.5		
20-26.5 DK 46666	20 14 261	mm	384	384	710	505	787	6.9	9.5	12.7	25.4	kg	14.2	3	10
		inch	15.13	15.13	27.94	19.88	31.00	0.27	0.38	0.50	1.00	lbs	31.3		
H 20-6	20 17 018	mm	385	385	746	535	810	9.0	11.0	13.0	25.5	kg	16.7	4	10
		inch	15.16	15.16	29.37	21.06	31.89	0.35	0.43	0.51	1.00	lbs	36.8		

16



Imprint

The content of this publication is provided for information only and without responsibility. Continental Reifen Deutschland GmbH makes no representations about the accuracy, reliability, completeness or timeliness of the information in this publication. Continental Reifen Deutschland GmbH may, in its sole discretion, revise the information contained herein at any time without notice.

Continental Reifen Deutschland GmbH's obligations and responsibilities regarding its products are governed solely by the agreements under which they are sold. Unless otherwise agreed in writing, the information contained herein does not become part of these agreements. This publication does not contain any guarantee or agreed quality of Continental Reifen Deutschland GmbH's products or any warranty of merchantability, fitness for a particular purpose and non-infringement. Continental Reifen Deutschland GmbH may make changes in the products or services described at any time without notice.

This publication is provided on an "as is" basis. To the extent permitted by law, Continental Reifen Deutschland GmbH makes no warranty, express or implied, and assumes no liability in connection with the use of the information contained in this publication. Continental Reifen Deutschland GmbH is not liable for any direct, indirect, incidental, consequential or punitive damages arising out of the use of this publication. Information contained herein is not intended to announce product availability anywhere in the world.

The trademarks, service marks and logos (the Trademarks) displayed in this publication are the property of Continental Reifen Deutschland GmbH and/or its affiliates. Nothing in this publication should be construed as granting any license or right to the Trademarks. Without the express written consent of Continental Reifen Deutschland GmbH the use of the Trademarks is prohibited.

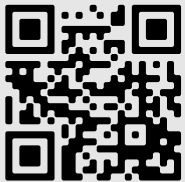
All text, images, graphics and other materials in this publication are subject to the copyright and other intellectual property rights of Continental Reifen Deutschland GmbH and/or its affiliates. Continental Reifen Deutschland GmbH owns the copyrights in the selection, coordination and arrangement of the materials in this publication. These materials may not be modified or copied for commercial use or distribution.

Copyright © 2023 Continental Reifen Deutschland GmbH
All rights reserved.



Change to the Best

Go with **ContiBladders**



www.conti-bladders.com

