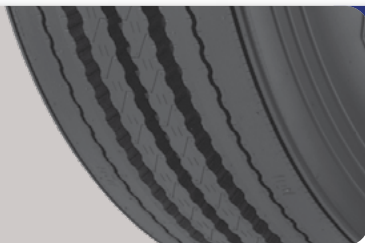


## PRODUCT OVERVIEW

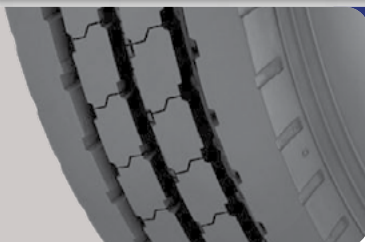
S380A



**Long Haul Steer** // Over the highway all-position radial designed for steer position.

- »» The S380A features a 19/32" tread and is designed for over the road highway use.
- »» 6 rib tread pattern and decoupler groove promote even wear and high removal mileage.
- »» Intermediate groove stone ejection system prevents stone retention, leading to longer casing life.

S360



**Regional All Position** // Short haul, local delivery, all position service.

- »» All purpose, 18/32" tread pattern provides good mileage and abrasion resistance in all-position service.
- »» Stone ejection system reduces stone retention and casing penetration.
- »» Multi-service tread compound provides good mileage and cut and tear resistance.

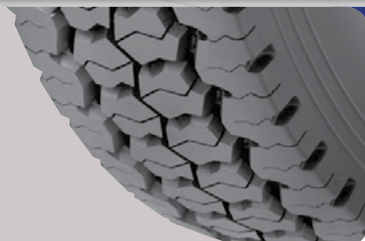
D450



**Regional Drive** // Long or short haul, on/off highway, drive axle.

- »» Innovative tread pattern that has proven superior in reducing stone retention.
- »» Open shoulder design provides excellent traction.
- »» Advanced tread compound for long original mileage.

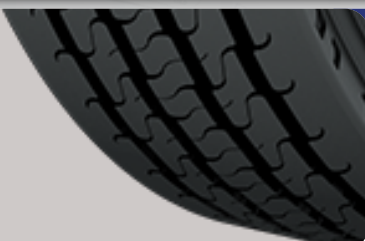
D460



**Long Haul Drive** // Tandem drive axle for long and short over-the-road use.

- »» Innovative tread pattern minimizes stone retention providing excellent retreadability.
- »» Closed shoulder tread design promotes even tread wear.
- »» Advanced tread compound for long mileage.

LMT350



**19.5" Regional All-Position** // Regional hauling and on/off-road, all-position  
Commercial duty light trucks

- »» Tread compound designed to provide long tread life in regional applications
- »» Patented innovative groove technology leads to minimum stone retention, extending casing life.
- »» Tread pattern designed for excellent wet traction and reduced noise.

LMT450



**19.5" Regional Drive** // Regional hauling and on/off-road, drive axle.

- »» Innovative tread pattern minimizes stone retention providing excellent retreadability.
- »» Open shoulder design for excellent traction.
- »» Advanced tread compound for long mileage.

MSL



**Regional All-Position** // Regional hauling and on/off-road, all-position.

- »» Multi-service tread pattern provides good mileage on-highway and traction in off-highway services.
- »» Thick undertread resists casing penetration and damage for multiple retread opportunities.
- »» Cut and tear resistant tread compound provides excellent on/off highway services.

# AMERI★STEEL

## PRODUCT DATA

TIRE & TIRE SIZE	LOAD RANGE	ARTICLE NUMBER	TREAD DEPTH (32nds)	MAX SPEED (MPH)	STATIC LOADED RADIUS		OVERALL INFLATED DIAMETER		OVERALL INFLATED WIDTH		LOADED SECTION WIDTH		APPROVED RIM(S)	MINIMUM DUAL SPACING		REVS PER UNIT		TIRE WEIGHT		MAX. LOAD @ INFLATION		
					IN	MM	IN	MM	IN	MM	IN	MM		IN	MM	MI	KM	LB	KG	SINGLE	DUAL	
					LBS, PSI (KG, KPa)		LBS, PSI (KG, KPa)															
S380A	295/75R22.5	G	05111410000	19	75	18.7	475	40.3	1024	11.0	279	12.2	310	8.25	12.5	318	514	319	110	50	6175, 110 (2800, 760)	5675, 110 (2575, 760)
	11R22.5	H	05123230000	18	75	19.4	493	41.4	1052	11.1	282	12.2	310	8.25	12.5	318	500	311	113	51	6610, 120 (3000, 830)	6005, 120 (2725, 830)
S360	11R24.5	H	05123240000	18	75	20.4	518	43.4	1102	11.1	282	12.2	310	8.25	12.5	318	477	296	121	55	7160, 120 (3250, 830)	6610, 120 (3000, 830)
	11R22.5	H	05222590000	26	75	19.5	495	41.7	1059	11.3	287	12.1	307	8.25	12.5	318	496	308	122	55	6610, 120 (3000, 830)	6005, 120 (2725, 830)
D450	11R24.5	H	05222600000	26	75	20.5	521	43.7	1110	11.3	287	12.2	310	8.25	12.5	318	474	294	131	59	7160, 120 (3250, 830)	6610, 120 (3000, 830)
	11R22.5	H	05211360000	26	75	19.5	495	41.7	1059	11.3	287	12.1	307	8.25	12.5	318	496	308	121	55	6610, 120 (3000, 830)	6005, 120 (2725, 830)
D460	295/75R22.5	G	05211350000	26	75	19.0	481	40.6	1031	11.1	282	12.2	309	8.25	12.5	318	510	317	114	53	6175, 110 (2800, 760)	5675, 110 (2575, 760)
	11R24.5	G	05211330000	26	75	20.5	521	43.7	1110	11.3	287	12.2	310	8.25	12.5	318	474	294	127	57	6610, 105 (3000, 720)	6005, 105 (2725, 720)
	11R24.5	H	05211340000	26	75	20.5	521	43.7	1110	11.3	287	12.2	310	8.25	12.5	318	474	294	129	59	7160, 120 (3250, 830)	6610, 120 (3000, 830)
LMT350	225/70R19.5	G	05224590000	16	87	14.9	378	31.9	810	8.6	218	9.4	239	6.00	10.0	254	649	403	63	28	3970, 110 (1800, 760)	3750, 110 (1700, 760)
LMT450	225/70R19.5	G	05124340000	18	87	15.0	381	32.0	813	8.6	218	9.4	239	6.00	10.0	254	647	402	62	28	3970, 110 (1800, 760)	3750, 110 (1700, 760)
MSL	11R22.5	H	05153720000	20	75	19.4	493	41.5	1054	11.1	281	12.2	309	8.25	12.5	318	499	310	115	52	6940, 120 (3150, 830)	6395, 120 (2900, 830)
	11R24.5	H	05153730000	20	75	20.5	521	43.6	1107	11.1	282	12.2	310	8.25	12.5	318	475	295	123	56	7160, 120 (3250, 830)	6610, 120 (3000, 830)

**TUBELESS TIRES ON 15 DEGREE DROP CENTER RIMS**

Note - Rim listed first is the measuring rim. Minimum Dual Spacing calculated without chains. # - Exceeding the lawful speed limit is neither recommended nor endorsed. Overall widths will change 0.1 inch (2.5 mm) for each 1/4 inch change in rim width. Minimum dual spacing should be adjusted accordingly. Continental Tire the Americas, LLC reserves the right to change product specifications at any time without notice or obligations. Please consult rim manufacturers load and inflation limits. Never exceed rim manufacturers limits without permission of component manufacturer.

Continental Tire the Americas, LLC  
 1830 MacMillan Park Drive  
 Fort Mill, SC 29709  
 Phone: 704-583-3900  
 Fax: 704-583-8737  
[www.continental-truck.com](http://www.continental-truck.com)

Technical Customer Services & Warranty  
 3000 Continental Parkway  
 Clinton, MS 39056  
 Phone: 800-726-7113  
[TI\\_CQ\\_SM\\_help.trucktires@continental.com](mailto:TI_CQ_SM_help.trucktires@continental.com)

Inside Sales / U.S.  
 800-450-4028 (East)  
 800-450-3187 (West)