

HDC1 HT

Construction Drive for High Traction

Diamond shaped tread lug design

and shoulder notches are optimal for chaining.



Alternating groove geometry

and stone bumper system for maximum stone ejection.

M+S

This product is
Mud + Snow Certified.

Applications: Severe Service On/Off Road Drive Position.

HDC1 HT

Construction Drive for High Traction

Rigid belt package with full width top belt and extra sidewall protection for increased durability.

Diamond shaped tread lug design and shoulder notches are optimal for chaining.

Alternating groove geometry and stone bumper system for maximum stone ejection.

Built on the innovative Conti 3G Casing for **maximum retreadability**.

Mud & Snow (M+S) certified.



Key Features

M+S

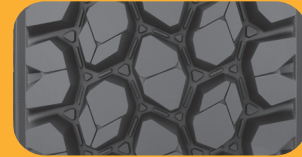
Mud + Snow Certified

3G

3G Casing



Retread Available



Recommended Application

A drive tire recommended for applications in:

Construction service

Compares to

Michelin: X Works Grip D | Bridgestone: M775 | Goodyear: Armor Max ESD

Product Data

| Tire Size | Load Range | Article Number | Tread Depth (32nds) | Max Speed (MPH) | Static Loaded Radius | | Overall Inflated Diameter | | Overall Inflated Width | | Loaded Section Width | | Approved Rim(s) | Minimum Dual Spacing | | Revs Per Unit | | Tire Weight | | Max. Load @ Inflation | | | |
|-----------|------------|----------------|---------------------|-----------------|----------------------|-----|---------------------------|------|------------------------|-----|----------------------|-----|-----------------|----------------------|-----|---------------|-----|-------------|----|-----------------------|-----------------------|------|--|
| | | | | | IN | MM | IN | MM | IN | MM | IN | MM | | IN | MM | MI | KM | LB | KG | Single | | Dual | |
| | | | | | | | | | | | | | | | | | | | | LBS, PSI (KG, kPa) | LBS, PSI (KG, kPa) | | |
| 11R22.5 | H | 05250950000 | 32 | 68 | 19.9 | 505 | 42.2 | 1072 | 11.6 | 295 | 13.0 | 330 | 8.25 | 12.5 | 318 | 491 | 305 | 136 | 62 | 6610, 120 (3000, 830) | 6005, 120 (2725, 830) | | |
| 11R24.5 | H | 05250810000 | 32 | 68 | 20.7 | 526 | 44.2 | 1123 | 11.6 | 295 | 12.5 | 318 | 8.25 | 12.5 | 318 | 468 | 291 | 146 | 66 | 7160, 120 (3250, 825) | 6610, 120 (3000, 830) | | |

TUBELESS TIRES ON 15 DEGREE DROP CENTER RIMS

Note - Rim listed first is the measuring rim. ## = Intelligent Tire Article #. Minimum Dual Spacing calculated without chains. These specifications subject to change without notice.
 # - Exceeding the lawful speed limit is neither recommended nor endorsed. Overall widths will change 0.1 inch (2.5 mm) for each 1/4 inch change in rim width. Minimum dual spacing should be adjusted accordingly. Continental Tire the Americas, LLC reserves the right to change product specifications at any time without notice or obligations. Please consult rim manufacturers load and inflation limits. Never exceed rim manufacturers limits without permission of component manufacturer.