

Install Tire Mounted Sensor with REMA TIP TOP Patch

Time estimate: **5-10 min**

Scan for video walk-through, other trainings, and Spanish translations.



1 Ensure all required materials have been gathered. You will need: Tire sensor, sensor boot, handheld scraper, mounting tool, roller & stitche, REMA TIP TOP patch, REMA BL-8F Special Blue Cement, and REMA liquid buffer.



2 Clean the inner liner of the tire with the handheld scraper tool to smooth out the surface. Spray and scrape 3x - once up and down, once diagonally left, once diagonally right to ensure a wax-free surface.



3 Spray the surface one more time with buff fluid and dry with a towel to clean all residue from the surface. Then, trace the mounting tool with chalk in your selected sensor position.

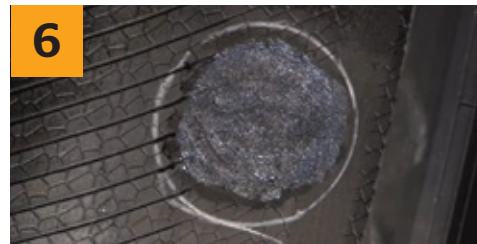


4 With a low speed buffer and 36 grit buffing bell, use light and constant movement to buff the area inside the chalk.

Note: Hitting the chalk will contaminate the surface and cause the install to fail.



5 Using a dedicated brass brush clean the buffed area, being careful not to contaminate with the area outside of the chalk. Use a vacuum to clean up any other debris outside of the chalk.



6 Apply REMA cement using a swirling motion until there is a thin, even coat. Cover the area until it appears to be dry.



7 Insert the tire sensor in the boot with REMA patch applied to the bottom, and place inside of the mounting tool. You can now remove the adhesive covering.



8 Press the mounting tool with the arrows facing the direction of tire rotation onto the tire where you previously applied the cement.



9 Press and hold the sensor for 10 seconds to ensure adhesion. Allow the tire to rest 24 hours before returning to service.



10 Remove any trapped air around the edges using the roller & stitche.



11 With your hand, gently wiggle/pull the sensor to confirm a secure installation. Sensor installation is complete.

Instructions remain the same for any generation tire sensor.